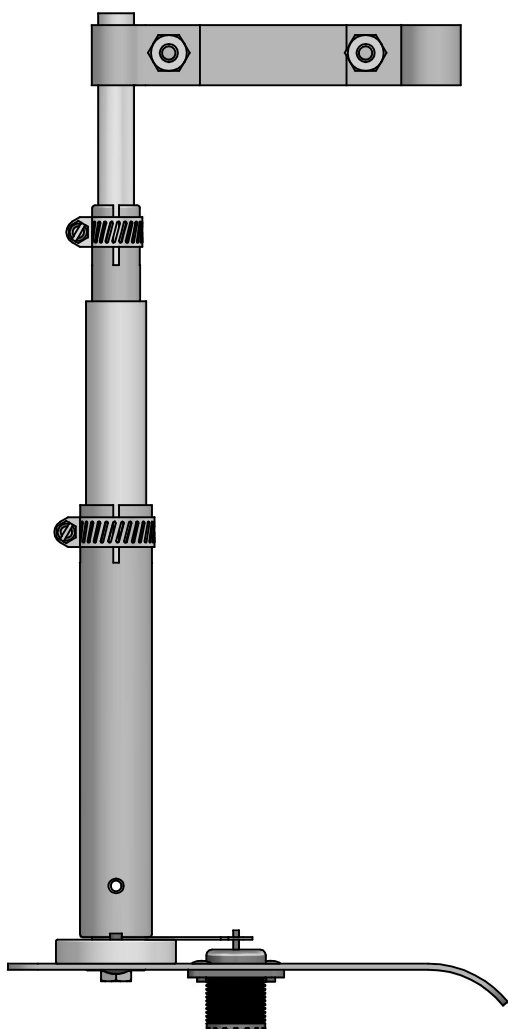
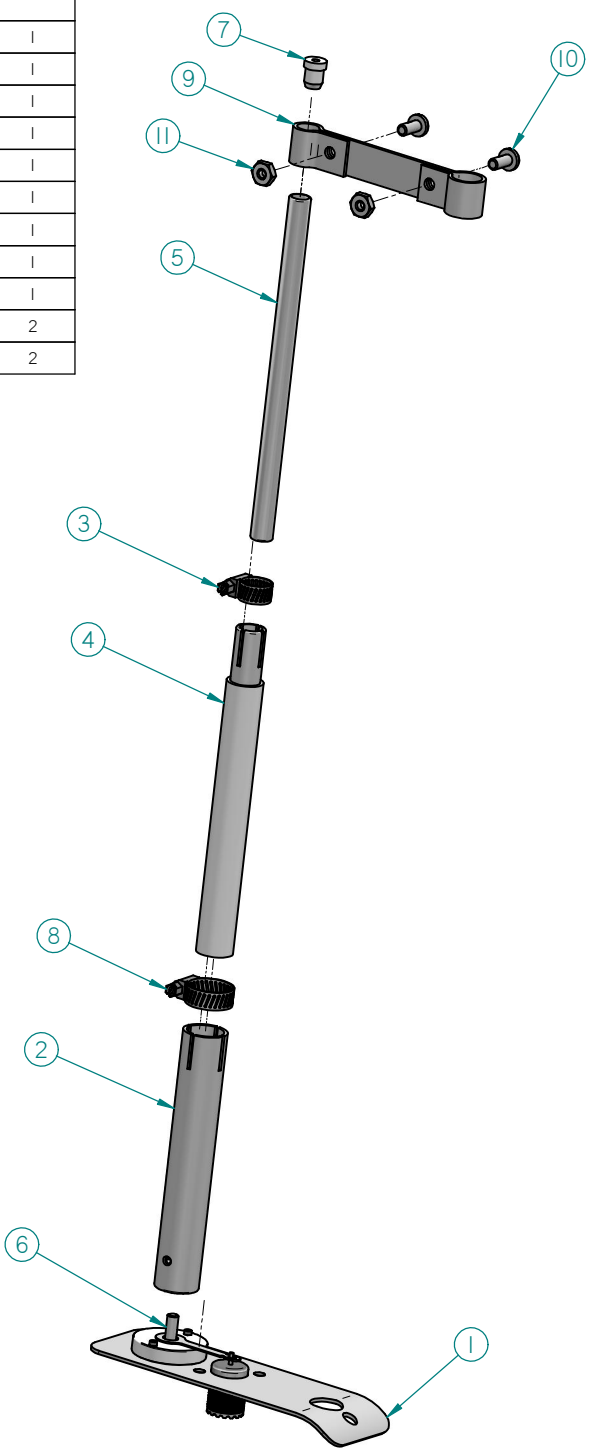


Item Number	Title	Quantity
1	Gamma Mounting Bracket Assembly	1
2	Gamma Sleeve Assembly	1
3	Hose Clamp, 1/2", M4P	1
4	Gamma Sleeve & Tube Assembly	1
5	Gamma Adjustment Element	1
6	10-32 x 3/4 Hex Hd. Bolt	1
7	Plastic Cap	1
8	Hose Clamp, 3/4", M6P	1
9	Gamma Clamp	1
10	10-32 x 7/16 SL PH Screw	2
11	10-32 Hex Nut	2



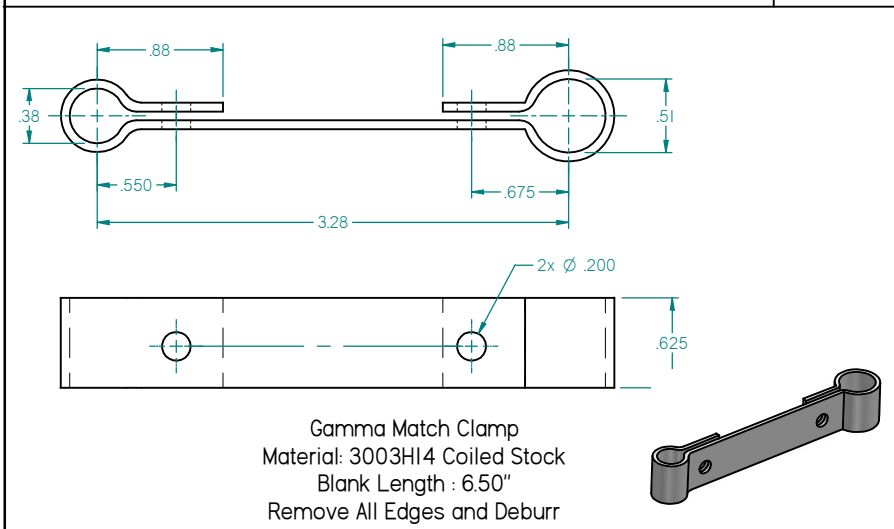
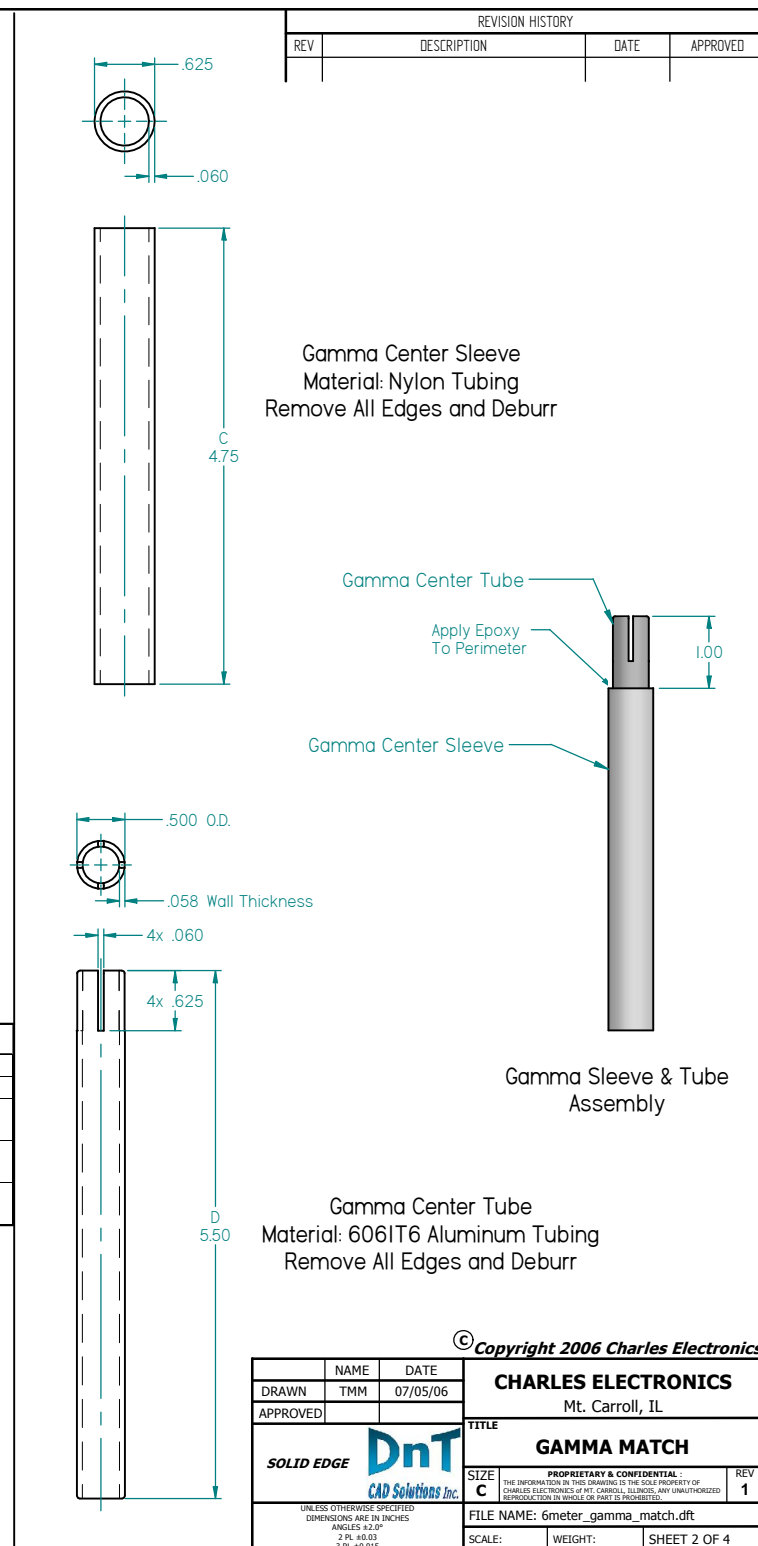
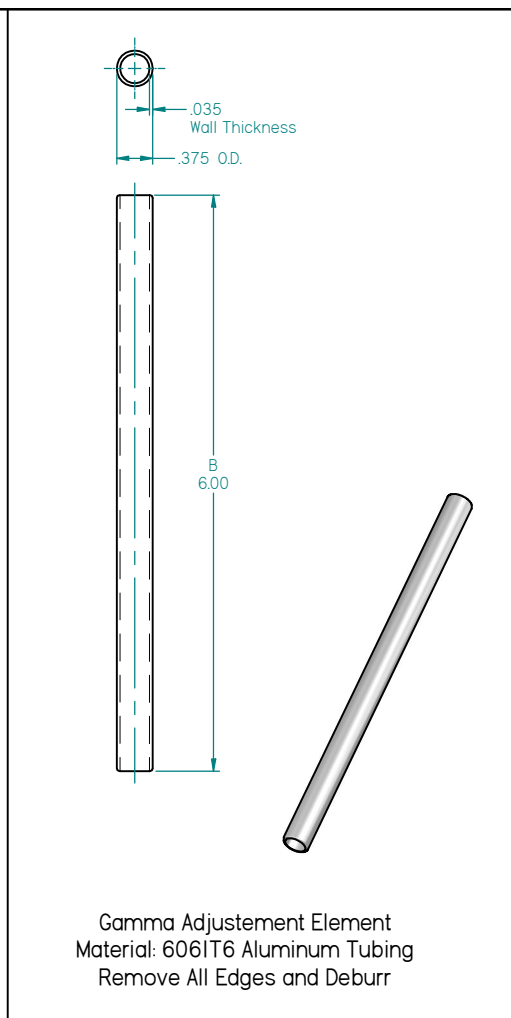
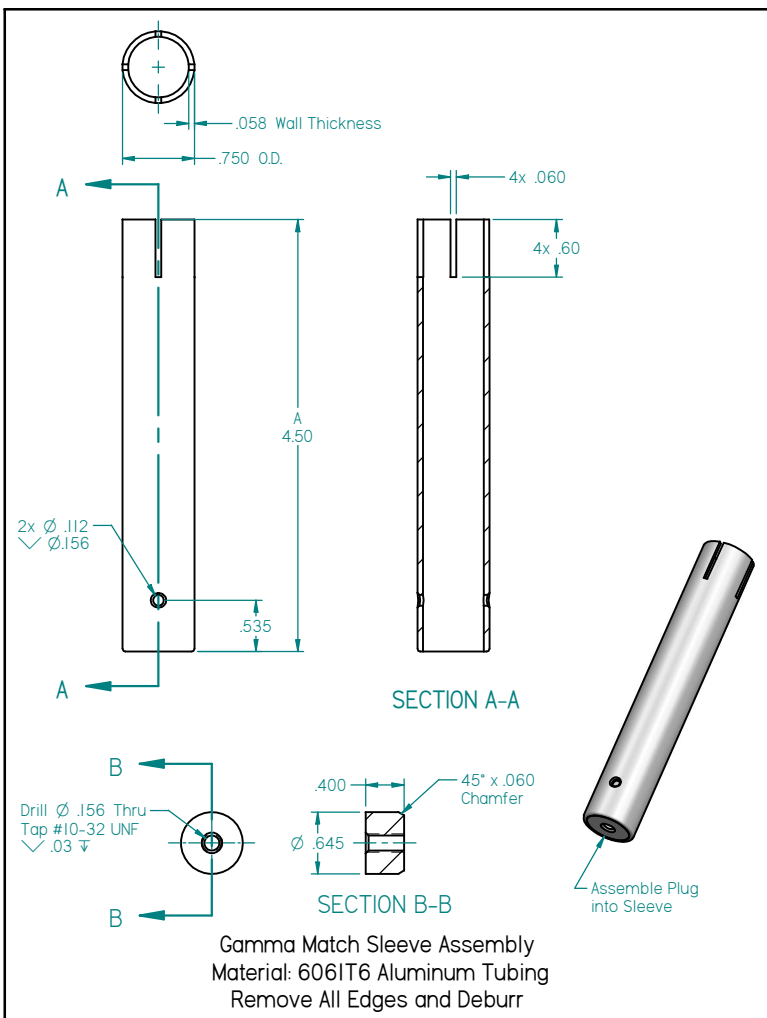
REVISION HISTORY			
REV	DESCRIPTION	DATE	APPROVED

© Copyright 2006 Charles Electronics

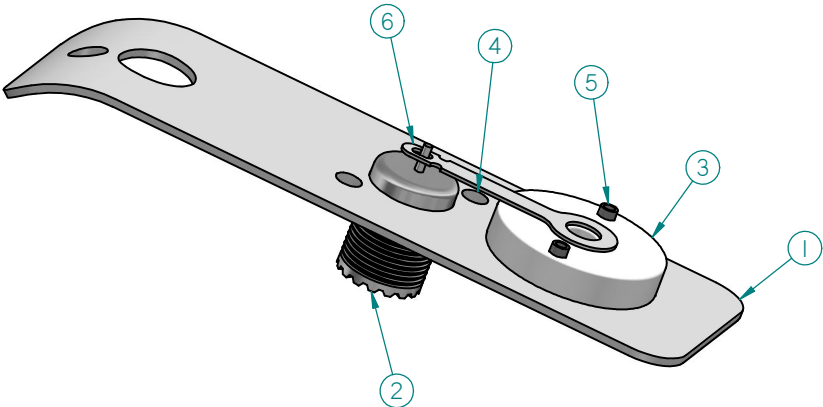
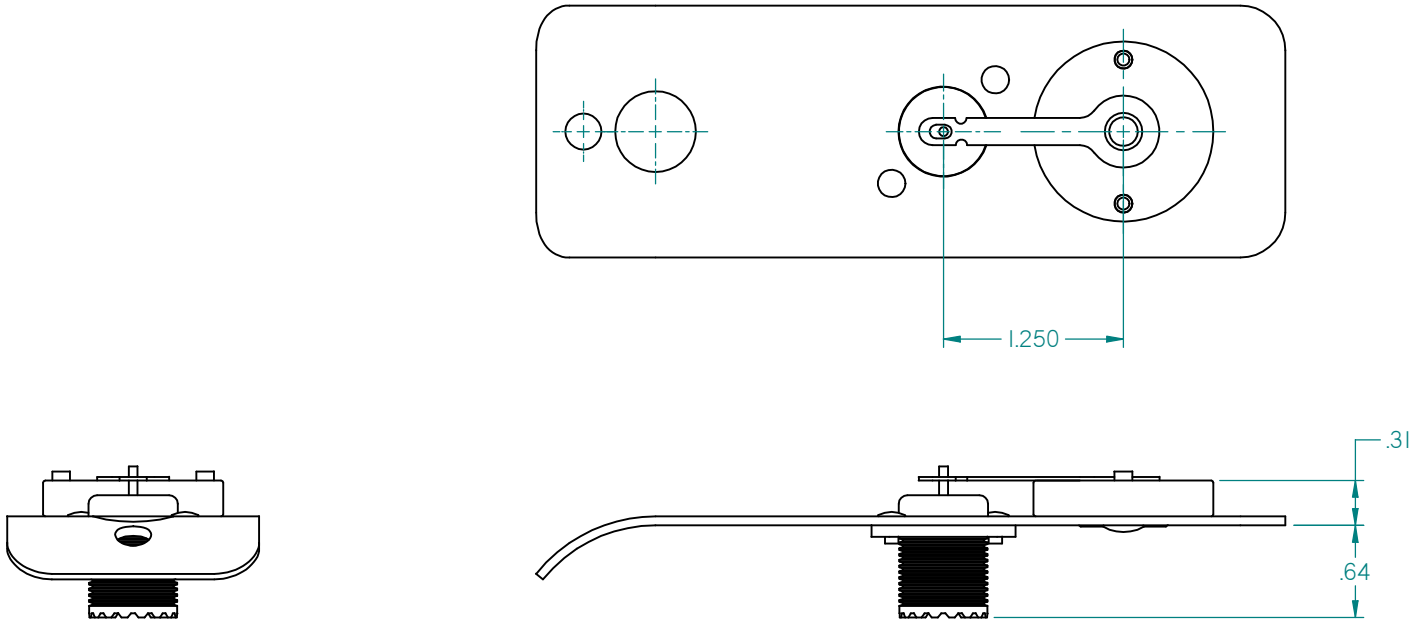
Horizontal Gamma Match Length			Vertical Gamma Match Length			NAME	DATE
Dimension			Dimension			DRAWN	TMM
Antenna	A	B	C	Antenna	A	B	C
2m				2m			
6m	4.50	7.50	9.50	6m	4.50	6.50	8.50
10m	6.50	10.50	15.00	10m	6.50	15.50	18.50

UNLESS OTHERWISE SPECIFIED DIMENSIONS ARE IN INCHES ANGLES ±2.0° 2 PL ±0.03 3 PL ±0.05	SOLID EDGE DnT CAD Solutions Inc.	FILE NAME: 6meter_gamma_match.dft
SCALE:	WEIGHT:	SHEET 1 OF 4

CHARLES ELECTRONICS Mt. Carroll, IL		
GAMMA MATCH		
SIZE C	PROPRIETARY & CONFIDENTIAL : THE INFORMATION IN THIS DRAWING IS THE SOLE PROPERTY OF CHARLES ELECTRONICS, INC. ANY UNAUTHORIZED REPRODUCTION IN WHOLE OR PART IS PROHIBITED.	REV 1



REVISION HISTORY			
REV	DESCRIPTION	DATE	APPROVED



Item Number	Title	Quantity
1	Gamma Mounting Bracket	1
2	Solder Lug	1
3	Gamma Bracket Spacer	1
4	Gamma Short Rivet	2
5	Gamma Long Rivet	2
6	Gamma Solder Lug	1

© Copyright 2006 Charles Electronics			CHARLES ELECTRONICS	
			Mt. Carroll, IL	
			TITLE	
			GAMMA MATCH	
			SIZE	REV
			C	1
			FILE NAME: 6meter_gamma_match.dft	
			SCALE:	WEIGHT:
			SHEET 3 OF 4	

