

**Consumer Response Group**

6500 W. Cortland Street \* Chicago, IL 60707 \* Phone: 773-889-8870 \* FAX: 773-622-2269

---

September 13, 2001

Page 1 of 5

## **TECHNICAL BULLETIN NUMBER 10012**

**MODEL(S):** Models 25, 29, and 148 with Soundtracker.

**SYMPTOM:** We have received numerous requests for instructions on how to disable Soundtracker on these models.

**SOLUTION:** The following instructions will allow you to permanently disable Soundtracker on transmit. Soundtracker will still be functional on receive, and can be turned on and off with the Soundtracker button.

**ADJUSTMENTS:** None.

**NOTES:** None.

Refer to the drawings for part locations.

### **25LTDST, 25WXST, 25NWST, 25WXNWST**

NOTE: All components are on a small PCB, located on the right hand side of the chassis.

1. Remove C809, a 1uF electrolytic capacitor.
2. Remove C819, a 1uF electrolytic capacitor.
3. Short pins 1 & 2 of IC802 together.

### **29LTDST, 29WXST, 29NHST, 29NWST, 29WXNWST**

NOTE: All components are located at the front of the main PCB, in the middle.

1. Remove C809, a 1uF electrolytic capacitor.
2. Remove C821, a 1uF electrolytic capacitor.
3. Short pins 1 & 2 of IC802 together.

### **148GTLST**

NOTE: All components are located on the small PCB for the channel switch.

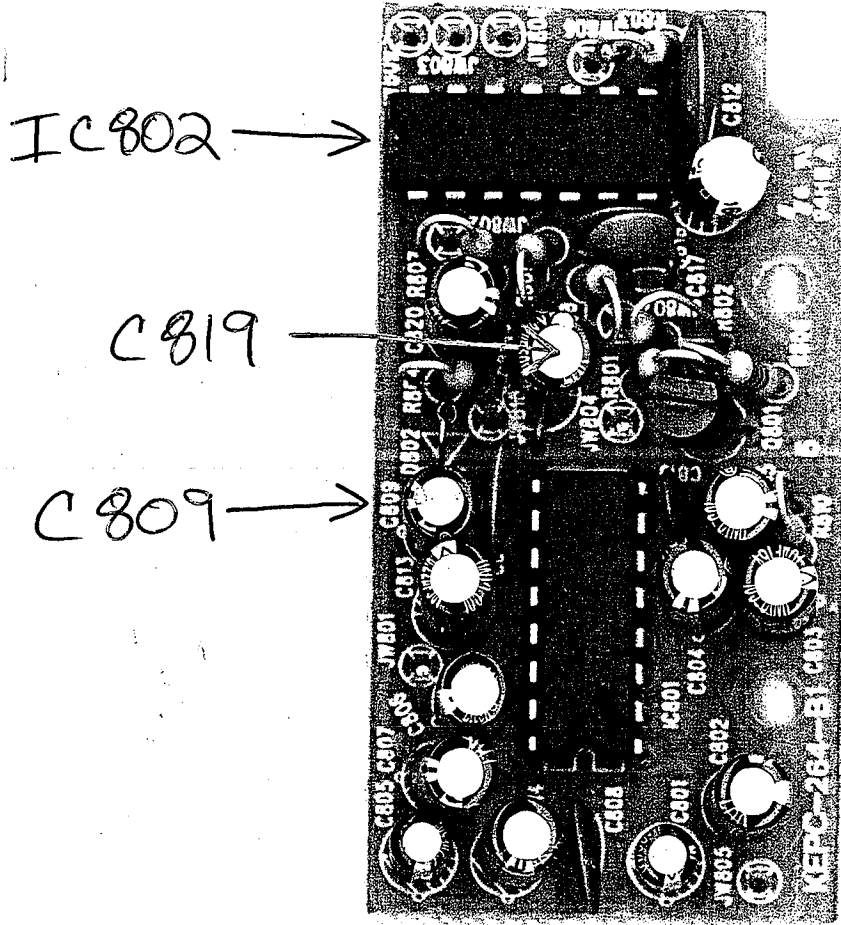
1. Remove C33, a .047uF surface mount capacitor.
2. Remove R12, a 1K surface mount resistor.
3. Install a jumper between pin 3 (red wire) and pin 5 (yellow wire) of the connector on the PCB for the channel switch.

### **148NWST**

NOTE: All components are located on the small PCB for the channel switch.

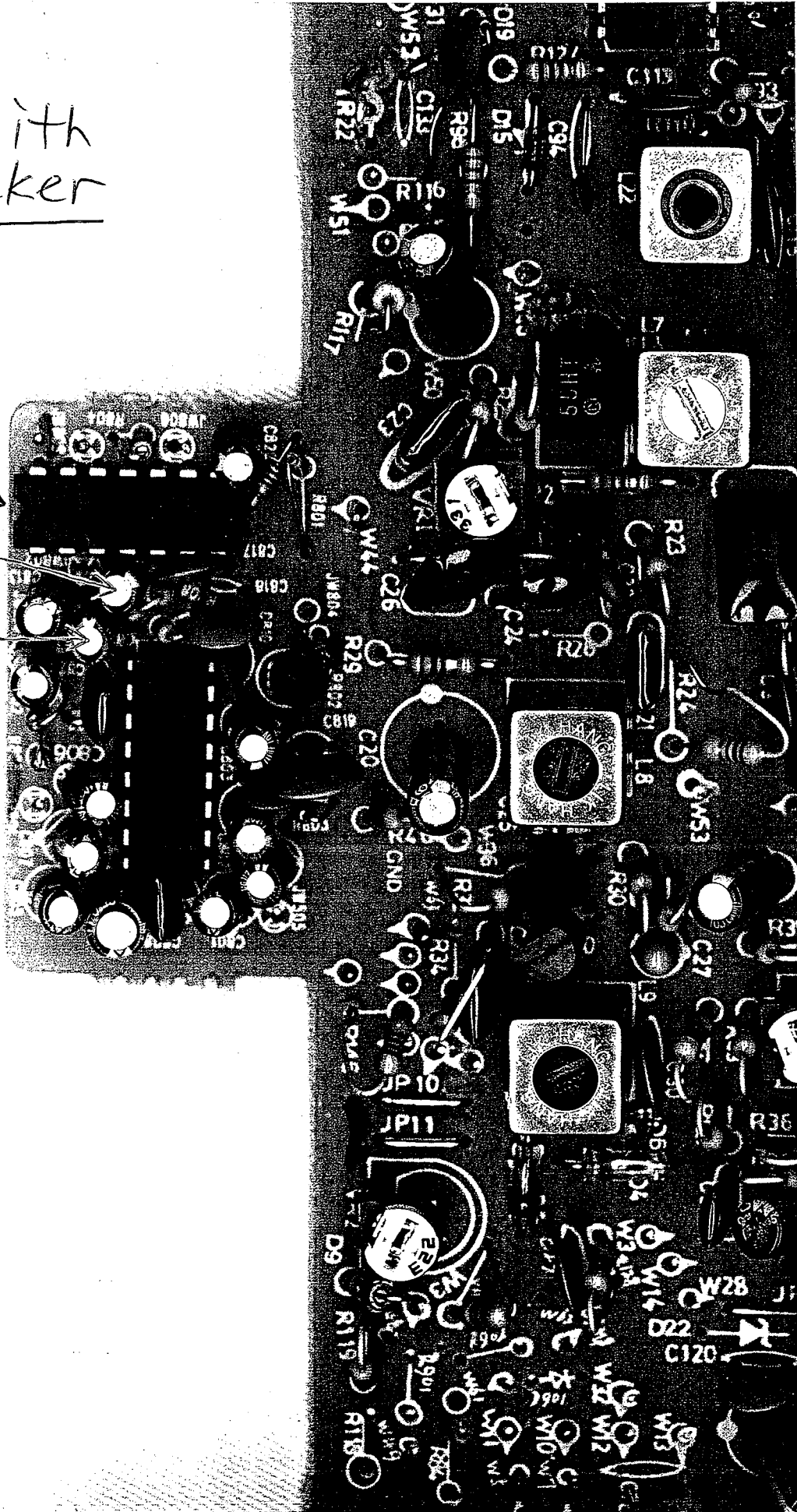
1. Remove C933, a .047uF surface mount capacitor.
2. Remove R912, a 1K surface mount resistor.
3. Install a jumper between pin 3 (red wire) and pin 5 (yellow wire) of the connector on the PCB for the channel switch.

All 25s with Soundtracker

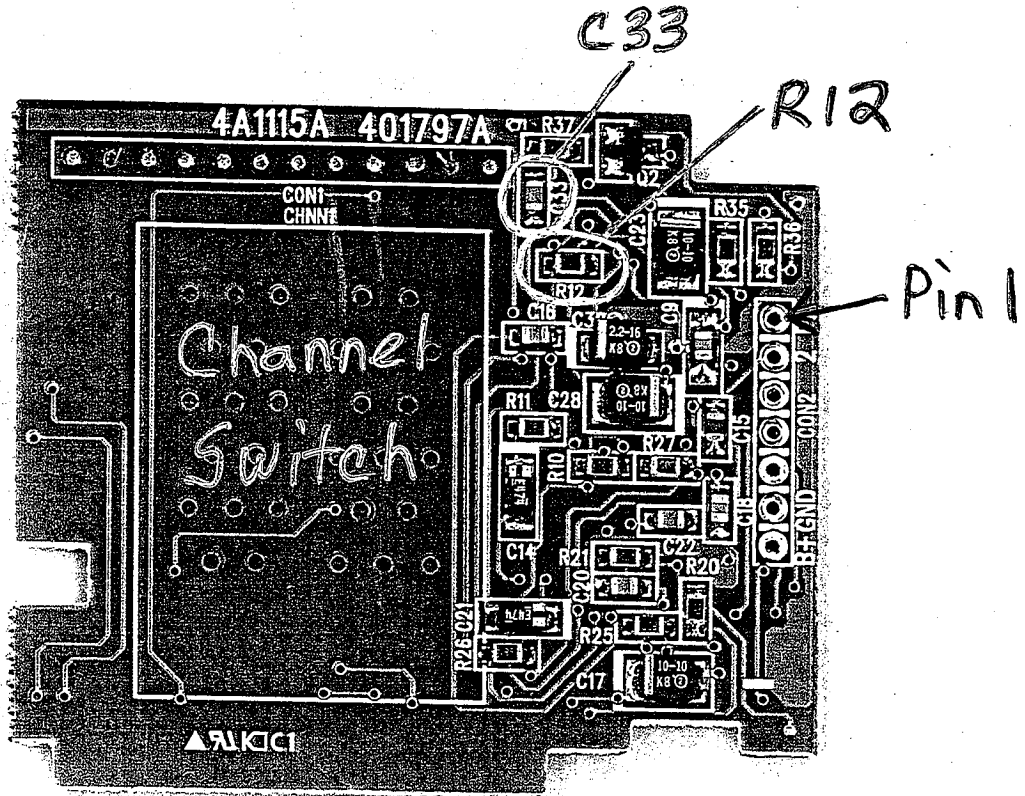


All 295 with  
Soundtracker

IC 802 →  
C821 →  
C809 →



148 GTL ST



148 NW ST

