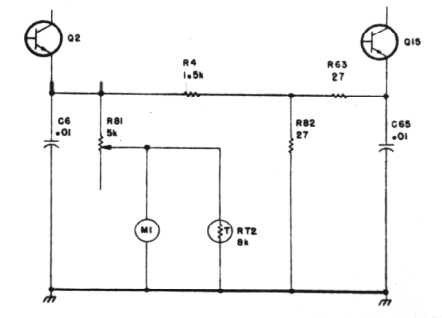


- NOTES:
1. ALL RESISTOR VALUES IN OHMS UNLESS OTHERWISE SPECIFIED.
  2. ALL CAPACITOR VALUES IN MICROFARADS UNLESS OTHERWISE SPECIFIED.
  3. VOLTAGES TAKEN USING 10Ma INPUT VTVM, MEASURED WITH RESPECT TO CHASSIS GROUND.  
RECEIVER-NO SQUELCH (CONTROL FULL CCW). NO SIGNAL.  
TRANSMITTER-50 OHM LOAD CONNECTED TO J2. KEYED. NO MODULATION.
  4. □ SQUELCHED CONDITION VOLTAGE READING.
  5. ○ = RF VOLTAGE READINGS TAKEN WITH BOONTON 91C RF VOLT METER (100:1 PROBE), UNMODULATED 3.7 WATT RF POWER OUTPUT.
  6. ALL VOLTAGES ON DIODES SHOWN IN RECEIVE CONDITION.
  7. S2A AND B ARE SHOWN IN CHANNEL ONE POSITION AS VIEWED FROM THE KNOB END OF SHAFT.
- ▲ S100 AND ASSOCIATED CIRCUITRY LOCATED BETWEEN J3 AND S1 AS PER DETAIL ▲  
MESSENGER 123SJ CIRCUIT GROUND IS ISOLATED FROM CHASSIS GROUND.

MESSENGER 123SJ SCHEMATIC DIAGRAM  
(FOR UNITS WITH "B" OR LATER MODEL DESIGNATOR  
ON SERIAL NUMBER STICKER)



MESSENGER 123A METER CIRCUIT  
SCHEMATIC DIAGRAM