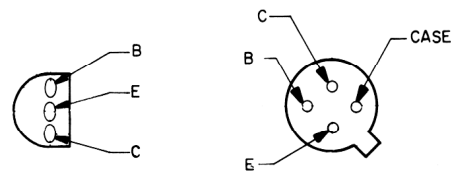
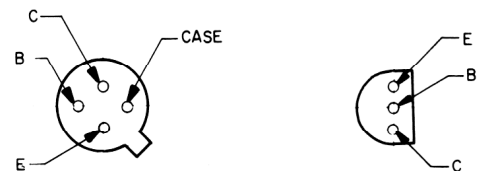


NOTE: Semiconductor basing is bottom view unless otherwise indicated.

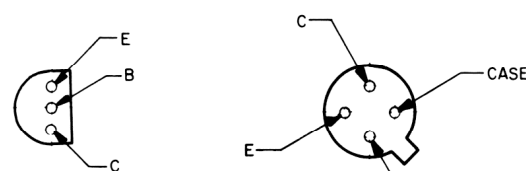
- NOTES:
1. ALL RESISTOR VALUES ARE IN OHMS AND ALL CAPACITOR VALUES ARE IN MICROFARADS UNLESS OTHERWISE SPECIFIED.
 2. SQUELCHED CONDITION VOLTAGE READING.
 3. R.F. VOLTAGE READING - TRANSMITTER KEYED.
 4. S201 IS SHOWN IN CHANNEL ONE POSITION.
 5. IS COMMON ON PRINTED CIRCUIT BOARD.
 6. IS GROUND ON CHASSIS RAIL.
 7. AND ARE PULSE WAVEFORM AND PEAK TO PEAK VOLTAGE READINGS WITH SQUARE WAVE INPUT OF 0v VOLT, PULSE REPETITION RATE 100Hz, PULSE WIDTH 1 MICROSECOND.



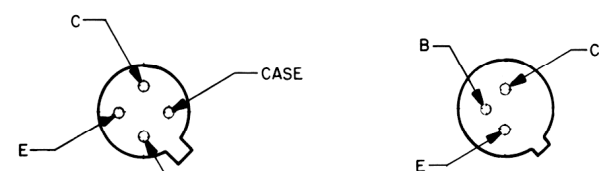
3018
Q1, 2, 4, 21, 203



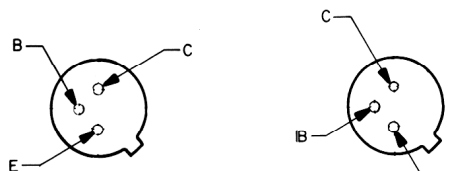
3029
Q3



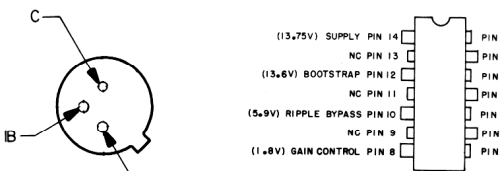
3011
Q5-9,
12-17,
22, 201, 202



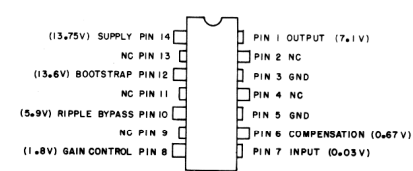
3021
Q10, 11



4004
Q18, 19



4005
Q20



U3
4001
BOTTOM VIEW

MESSENGER 323A SCHEMATIC DIAGRAM
(FOR UNITS WITH "A" OR LATER MODEL DESIGNATOR
ON SERIAL NUMBER STICKER)