

NOTES:

1. All resistors are 5%, 1/4 watt, with value given in ohms, unless specified otherwise.
2. All capacitor values are given in uF, unless specified otherwise.
3. Symbols used:
 - ⊖ - chassis ground
 - ⊖ - p.c. board ground
 - * - indicates component value may vary from unit to unit
 - * - numbered wires on schematic pages have no reference to electronic components, but are for ease in tracing wiring only

SEMICONDUCTOR TERMINAL CONNECTION (BOTTOM VIEW UNLESS OTHERWISE NOTED)

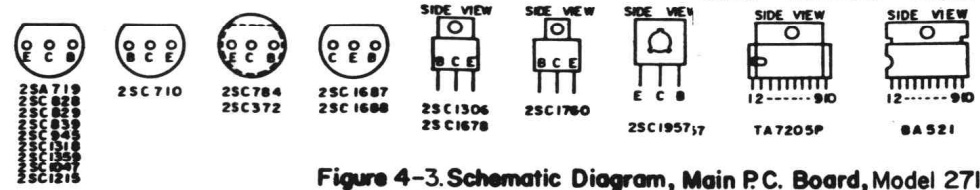


Figure 4-3. Schematic Diagram, Main P.C. Board, Model 2710