

FREQUENCY SYNTHESIZER CRYSTAL COMBINATION LIST

(A) Group 6 pcs.

X¹ 37.60 MHz
 X² 37.65 MHz
 X³ 37.70 MHz
 X⁴ 37.75 MHz
 X⁵ 37.80 MHz
 X⁶ 37.85 MHz

(B) Group 4 pcs.
 (Transmitting)

X⁷ 10.635 MHz
 X⁸ 10.625 MHz
 X⁹ 10.615 MHz
 X¹⁰ 10.595 MHz

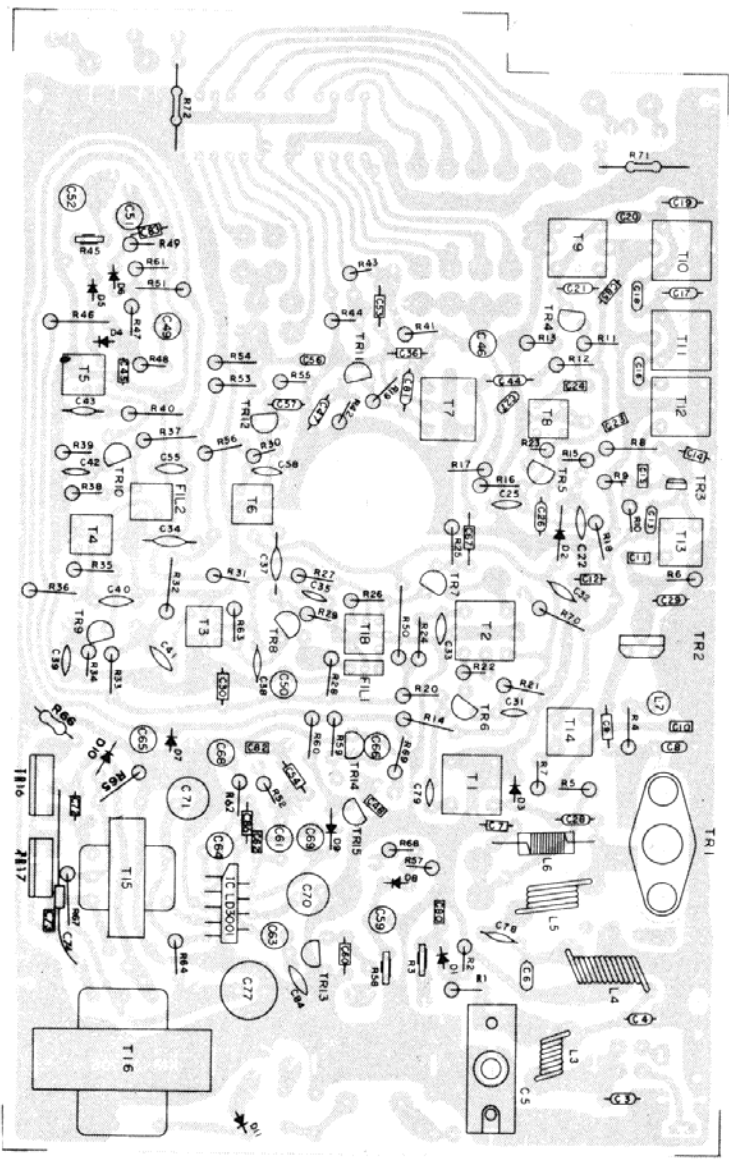
(C) Group 4 pcs.
 (Receiving)

X¹¹ 10.18 MHz
 X¹² 10.17 MHz
 X¹³ 10.16 MHz
 X¹⁴ 10.14 MHz

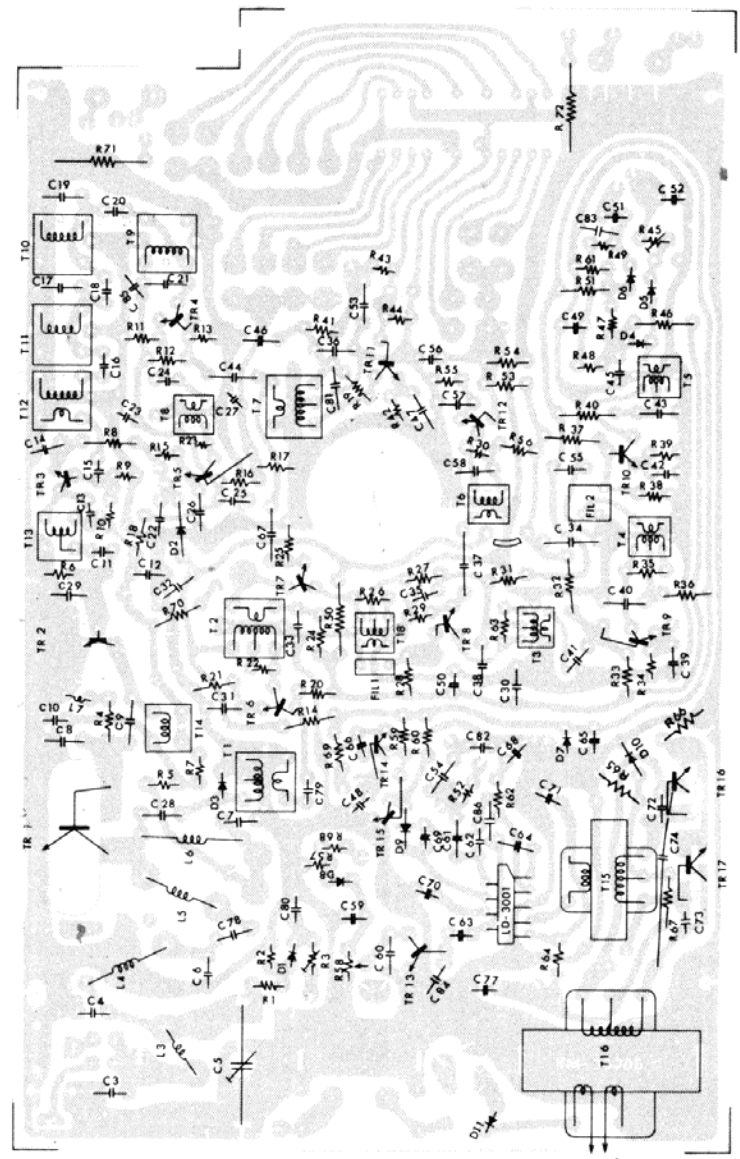
CHANNEL	FREQUENCY (MHz)	Combination (Transmit)	Combination (Receive)
1.	26.965	X ¹ - X ⁷	X ¹ - X ¹¹
2.	26.975	X ¹ - X ⁸	X ¹ - X ¹²
3.	26.985	X ¹ - X ⁹	X ¹ - X ¹³
4.	27.005	X ¹ - X ¹⁰	X ¹ - X ¹⁴
5.	27.015	X ² - X ⁷	X ² - X ¹¹
6.	27.025	X ² - X ⁶	X ² - X ¹²
7.	27.035	X ² - X ⁹	X ² - X ¹³
8.	27.055	X ² - X ¹⁰	X ² - X ¹⁴
9.	27.065	X ³ - X ⁷	X ³ - X ¹¹
10.	27.075	X ³ - X ⁸	X ³ - X ¹²
11.	27.085	X ³ - X ⁹	X ³ - X ¹³
12.	27.105	X ³ - X ¹⁰	X ³ - X ¹⁴
13.	27.115	X ⁴ - X ⁷	X ⁴ - X ¹¹
14.	27.125	X ⁴ - X ⁸	X ⁴ - X ¹²
15.	27.135	X ⁴ - X ⁹	X ⁴ - X ¹³
16.	27.155	X ⁴ - X ¹⁰	X ⁴ - X ¹⁴
17.	27.165	X ⁵ - X ⁷	X ⁵ - X ¹¹
18.	27.175	X ⁵ - X ⁸	X ⁵ - X ¹²
19.	27.185	X ⁵ - X ⁹	X ⁵ - X ¹³
20.	27.205	X ⁵ - X ¹⁰	X ⁵ - X ¹⁴
21.	27.215	X ⁶ - X ⁷	X ⁶ - X ¹¹
22.	27.225	X ⁶ - X ⁸	X ⁶ - X ¹²
23.	27.255	X ⁶ - X ¹⁰	X ⁶ - X ¹⁴

MODEL 13-879B PARTS LAYOUT

FRONT VIEW

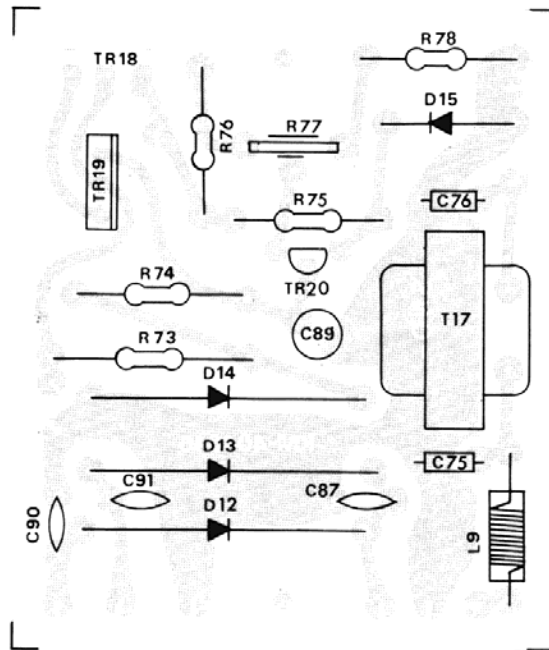


BACK VIEW

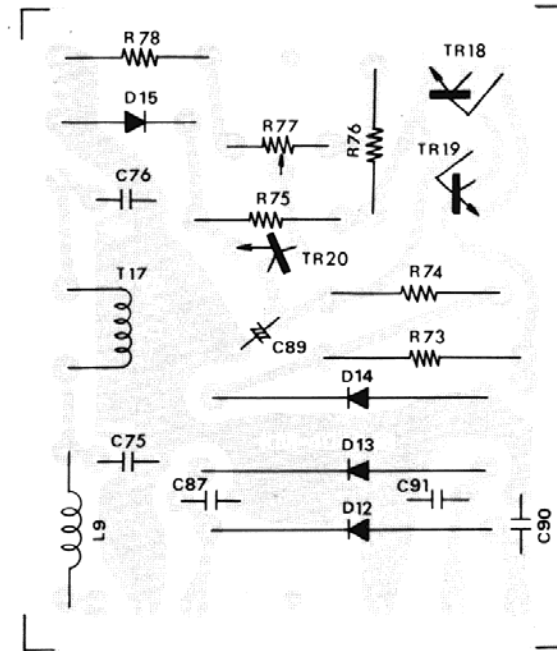


VOLTAGE REGULATOR

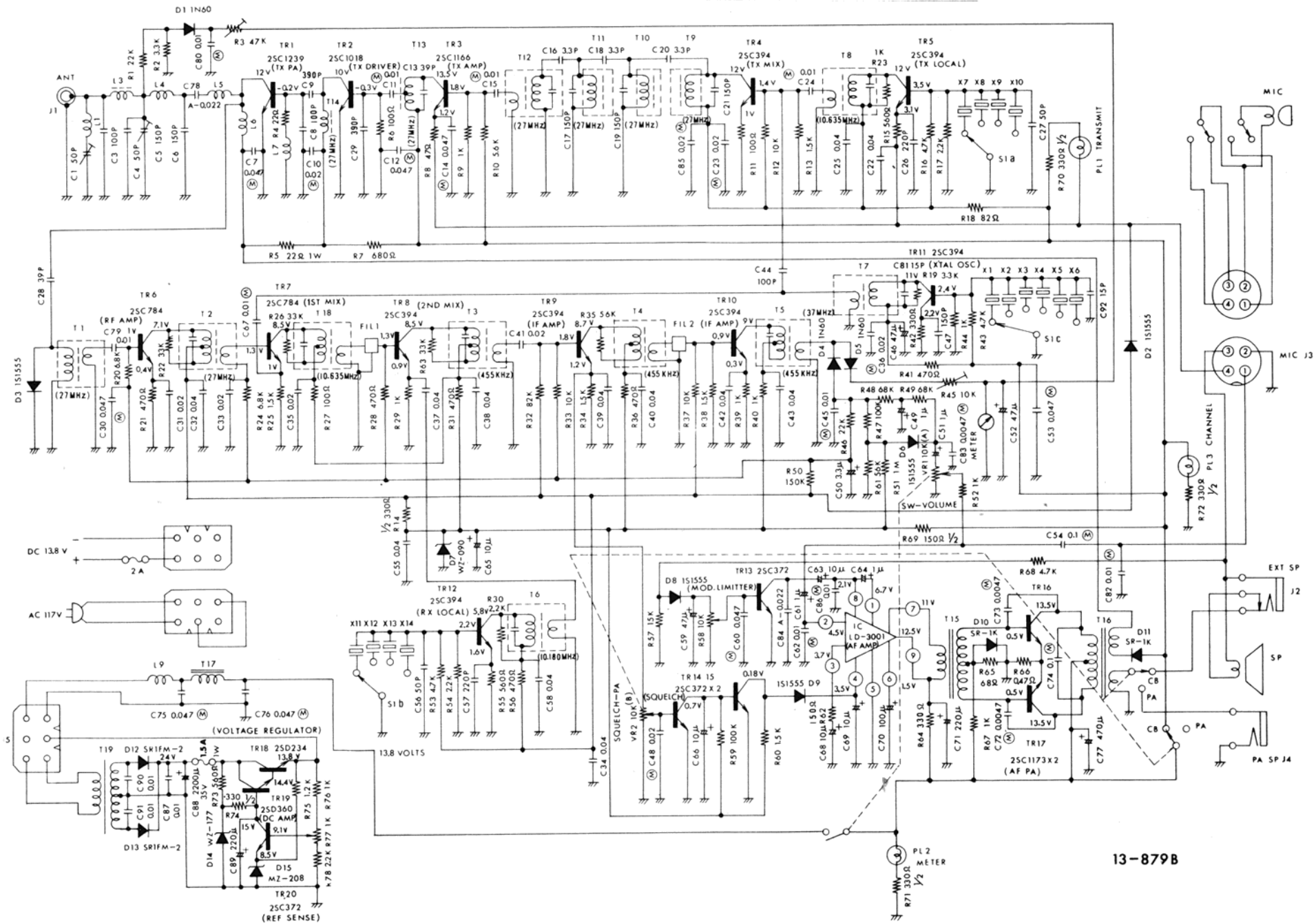
FRONT VIEW



BACK VIEW

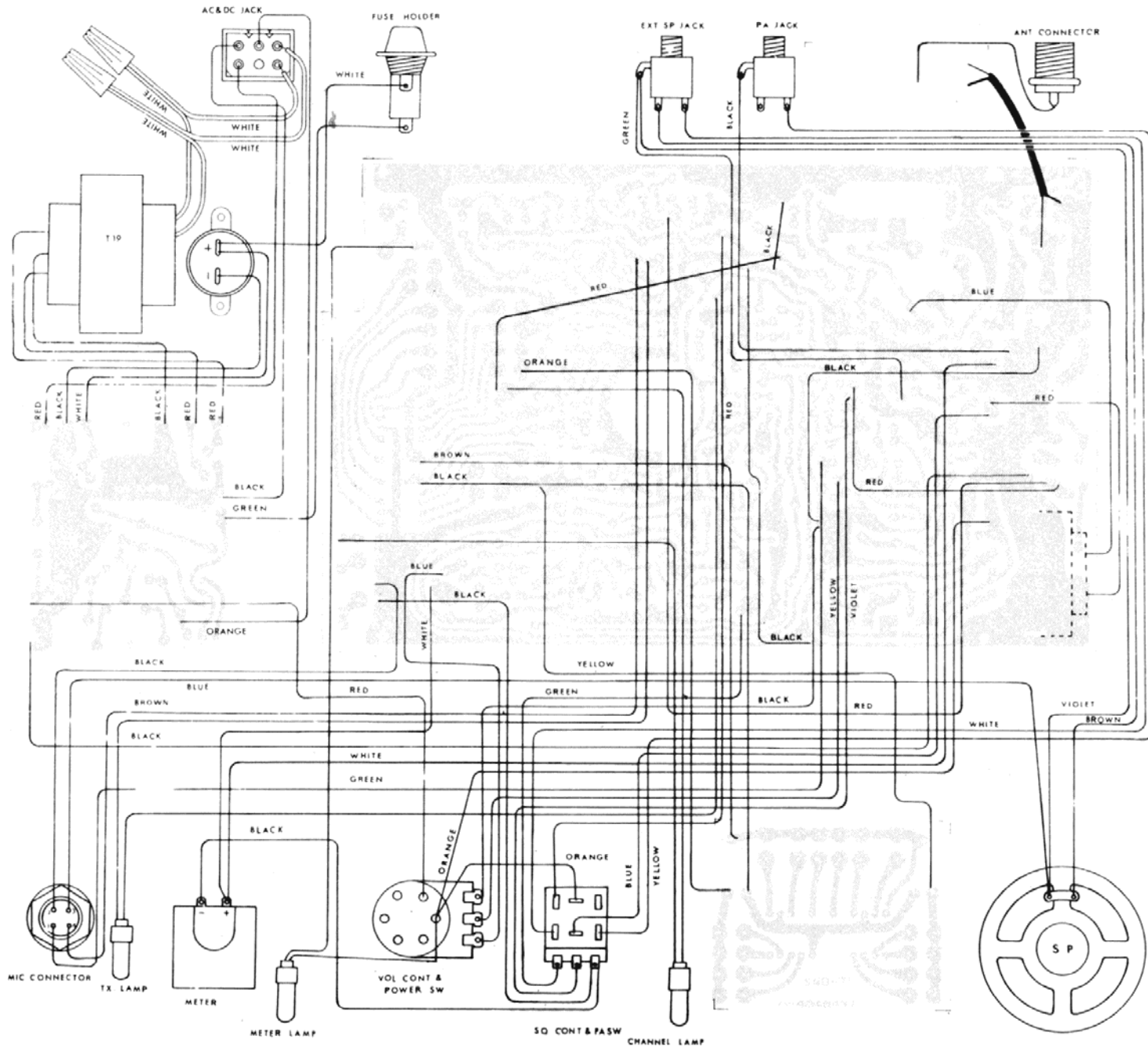


MODEL 13-879B SCHEMATIC DIAGRAM

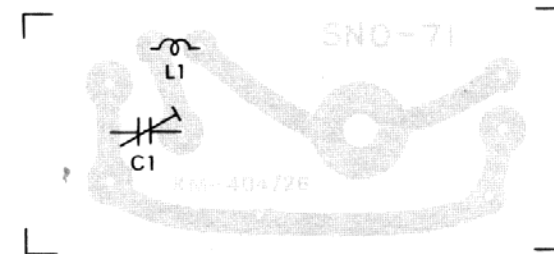
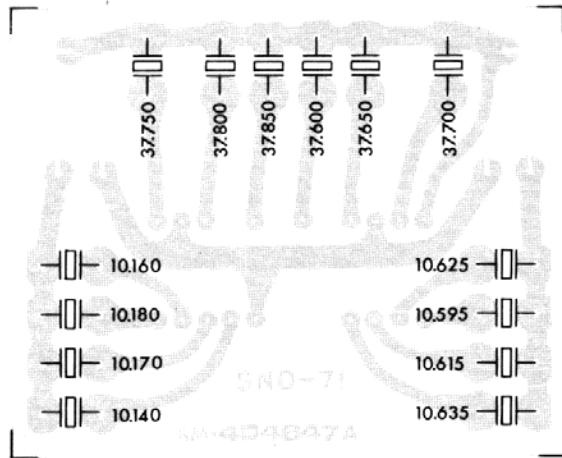
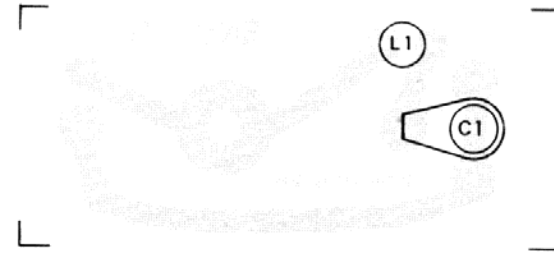
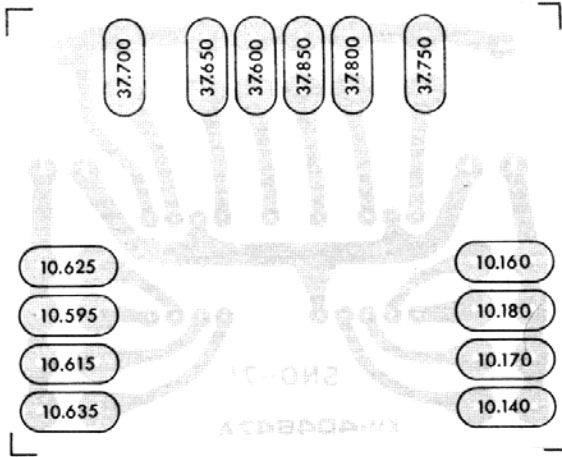


13-879B

WIRING DIAGRAM



CHANNEL SELECTOR · TVI



WARRANTY POLICY

Midland Electronics Company warrants each new Midland product to be free from defects in material and workmanship under normal use and service for a period of 90 days after delivery to the ultimate user and will replace or repair the product at our option, at no charge should it become defective and which our examination shall disclose to be defective and under warranty.

This warranty shall not apply to any Midland product which has been subject to misuse, neglect, accident, incorrect wiring not of our own installation, or to use in violation or instructions furnished by us, nor extended to units which have been repaired or altered outside of our factory.

This warranty does not cover carrying cases, earphones, batteries, antenna, broken or cracked cabinets, or any other accessory used in connection with this product.

This warranty is in lieu of all other warranties expressed or implied and no representative or person is authorized to assume for us any other liability in connection with the sale of our products.

Sales receipt must accompany product to validate the date of purchase.

MIDLAND ELECTRONICS COMPANY

110 West 12th Avenue
North Kansas City, Missouri 64116

Copyright 1974 Midland Electronics Co.,
North Kansas City, Mo. 64116 U.S.A.
Made Exclusively for Midland Electronics Company in Japan