

SERVICING YOUR TRANSCEIVER

The technical information, diagrams and charts provided in this manual are supplied for the use of a qualified holder of a first or second class radiotelephone license in servicing this transceiver. It is the users responsibility to see that this unit is operating at all times in accordance with the F.C.C. Citizens radio service regulation.

If you install your own transceiver, do not attempt to make any transmitter tuning adjustments. They are prohibited by the F.C.C. unless you hold or are in the presence and under the supervision of a first or second class radiotelephone licensed person. A Citizens Band or Amateur license is not sufficient.

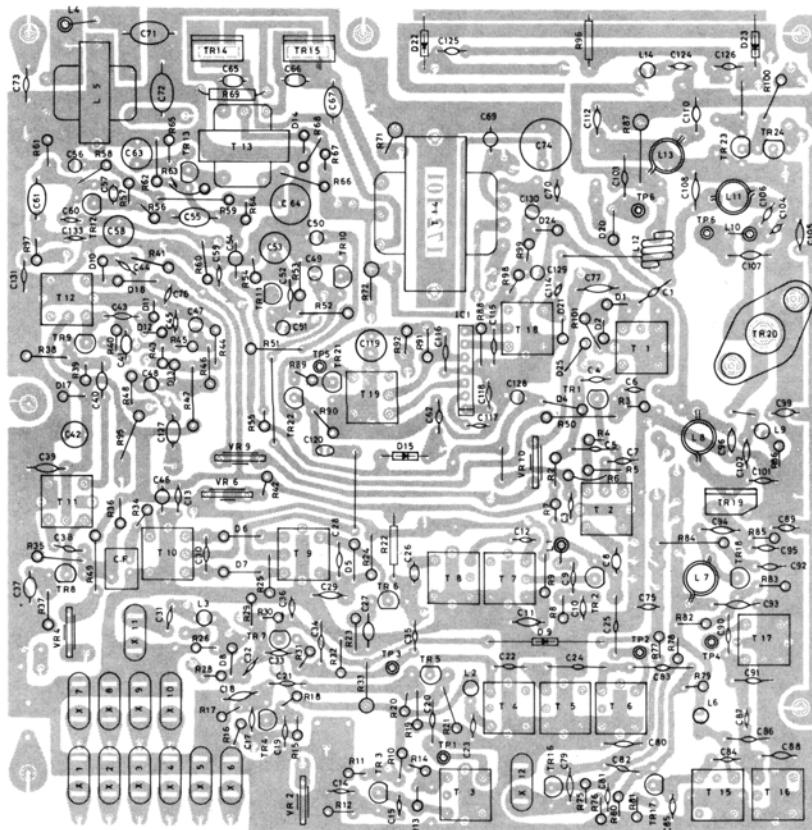
When service is performed by an authorized and licensed person, care must be taken in the replacement of parts to use only authorized parts, in order not to void the type acceptance of this model.

CRYSTAL FREQUENCY CHART

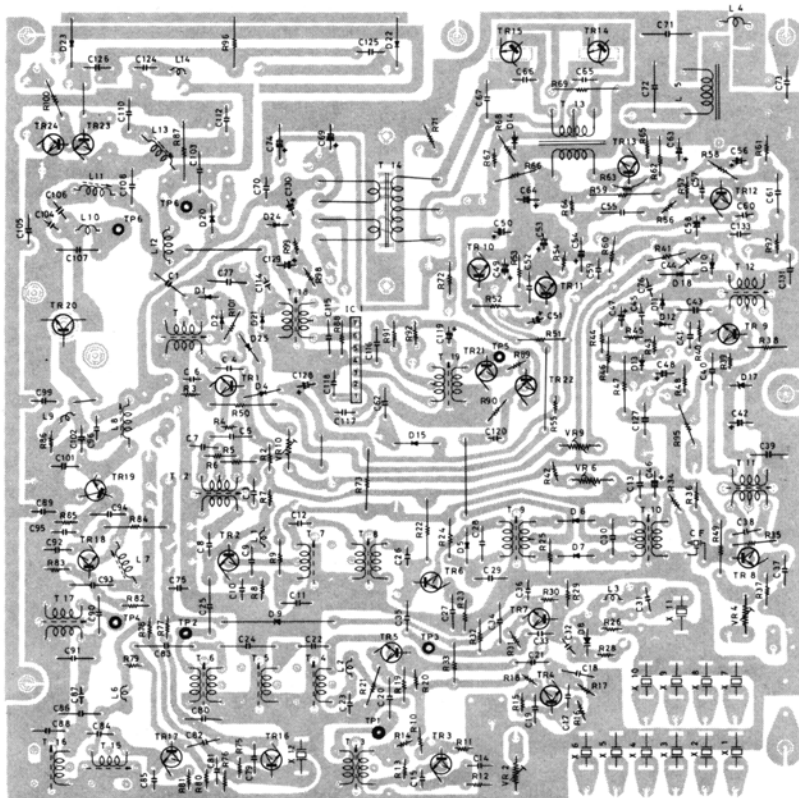
XTAL	CHANNEL																						
	1	2	3	4	5	6	7	8	9	10	11	12	13	14	15	16	17	18	19	20	21	22	23
MASTER 1																							
23.290	○	○	○	○																			
23.340					○	○	○	○															
23.390									○	○	○	○											
23.440													○	○	○	○							
23.490																	○	○	○	○			
23.540																					○	○	○
MASTER 2																							
14.950	○				○				○				○				○				○		
14.960		○				○				○				○				○				○	
14.970			○				○				○				○				○				
14.990				○				○				○				○				○			○
XMTR																							
11.275	○	○	○	○	○	○	○	○	○	○	○	○	○	○	○	○	○	○	○	○	○	○	○
RCVR																							
11.730	○	○	○	○	○	○	○	○	○	○	○	○	○	○	○	○	○	○	○	○	○	○	○

PARTS LAYOUT

FRONT VIEW

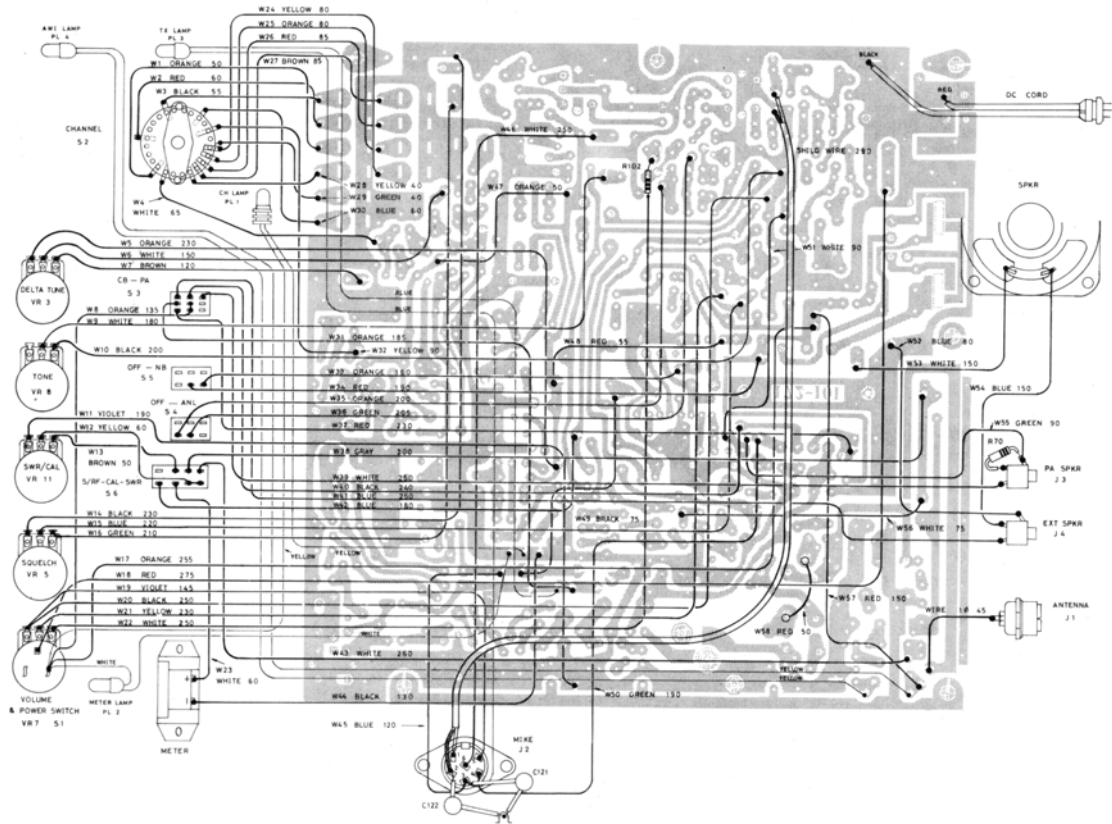


BACK VIEW

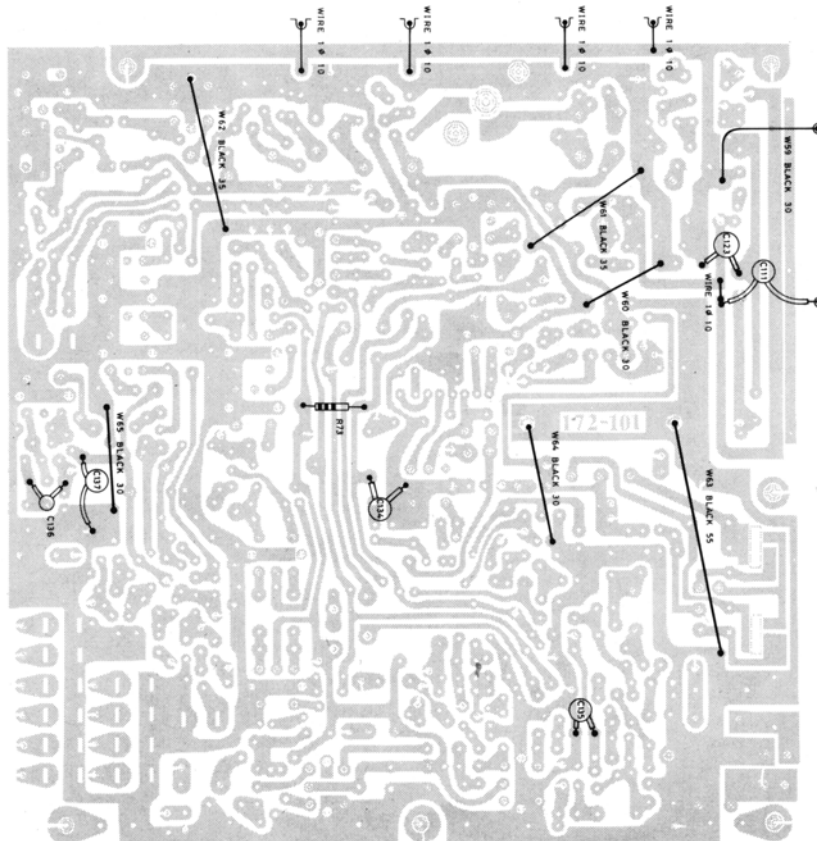


WIRING DIAGRAM

FRONT VIEW



BACK VIEW



MODEL 13-883 SCHEMATIC DIAGRAM

11, 12, 8, 9, 10
11, 12, 18, 19

03	40
02	0
01	60

13, 6, 17

03	40
02	0
01	60

77

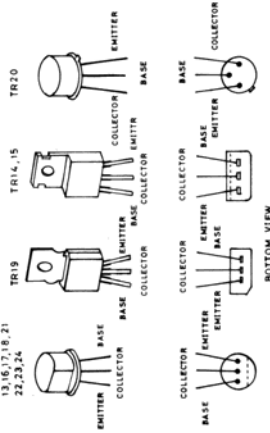
03	0
02	0
01	0

14, 5, 15, 16

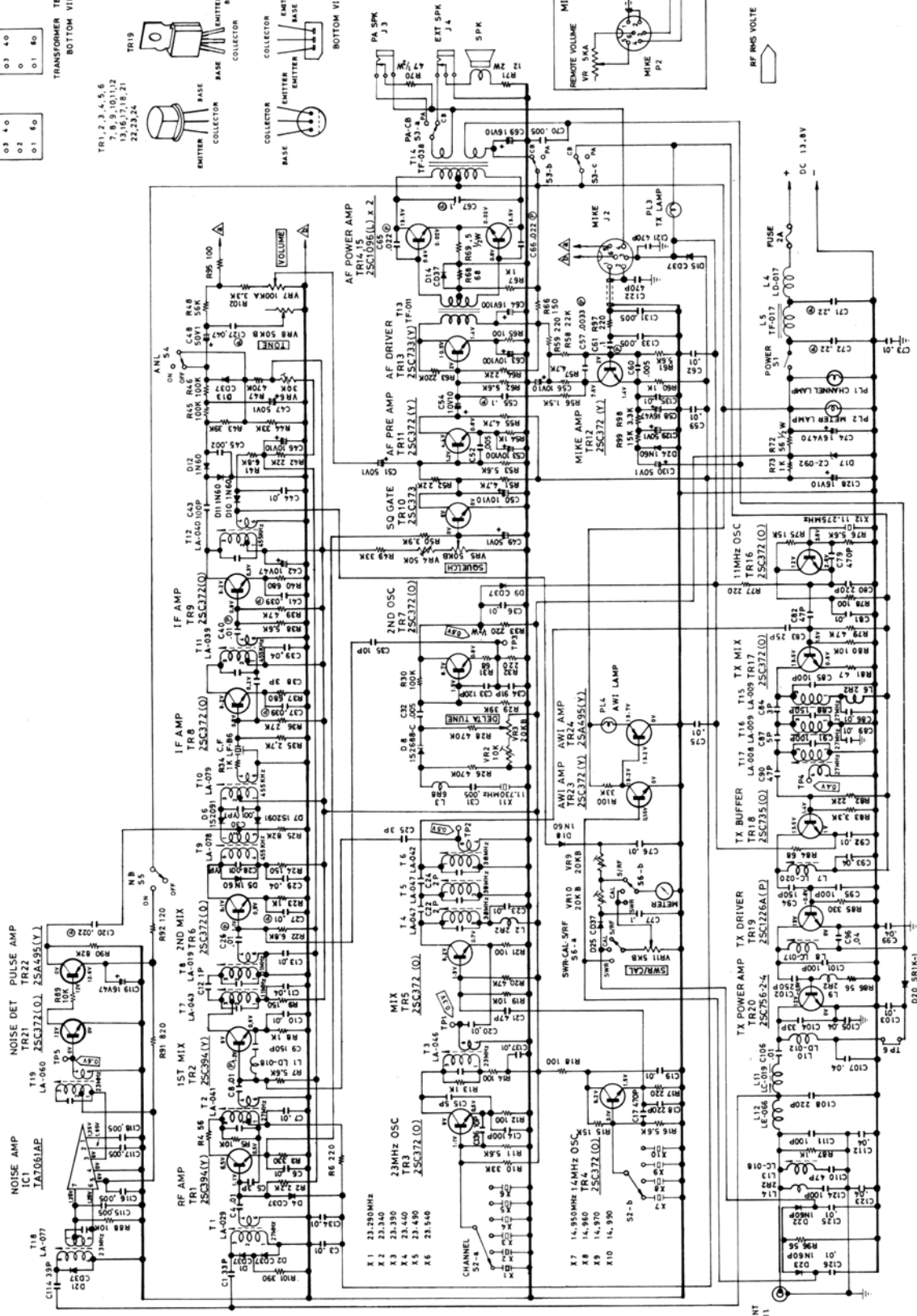
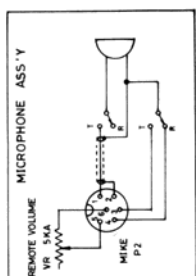
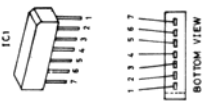
03	0
02	0
01	0

TRANSFORMER TERMINATION
BOTTOM VIEW

TR1, 2, 3, 4, 5, 6
13, 16, 17, 18, 21
22, 23, 24



IC1



RF RMS VOLTS



DC 13.8V



NOISE DET
IC1
TJZ081AE

NOISE AMP
TR21
TR22

NOISE DET
TR21
TR22

NOISE AMP
IC1
TJZ081AE

WARRANTY POLICY

Midland Electronics Company warrants each new Midland product to be free from defects in material and workmanship under normal use and service for a period of 90 days after delivery to the ultimate user and will replace or repair the product at our option, at no charge should it become defective and which our examination shall disclose to be defective and under warranty.

This warranty shall not apply to any Midland product which has been subject to misuse, neglect, accident, incorrect wiring not of our own installation, or to use in violation or instructions furnished by us, nor extended to units which have been repaired or altered outside of our factory.

This warranty does not cover carrying cases, earphones, batteries, antenna, broken or cracked cabinets, or any other accessory used in connection with this product.

This warranty is in lieu of all other warranties expressed or implied and no representative or person is authorized to assume for us any other liability in connection with the sales of our products.

Sales receipt must accompany product to validate the date of purchase.

MIDLAND ELECTRONICS COMPANY

110 W. 12th Avenue
North Kansas City, Missouri 64116

Copyright 1974 Midland Electronics Co.,
North Kansas City, Mo. 64116 U.S.A.
Made Exclusively for Midland Electronics Company in Japan