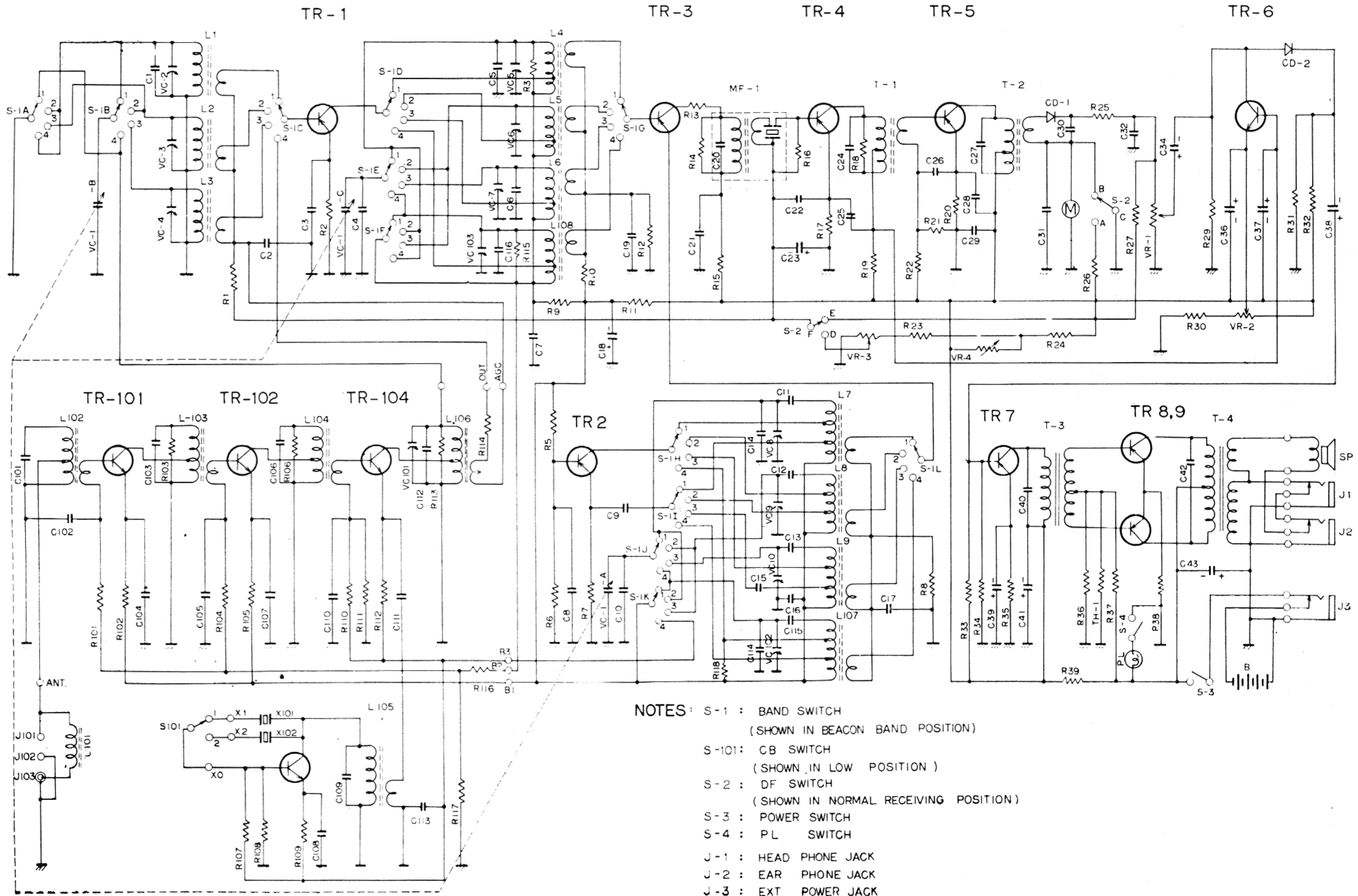


SCHEMATIC DIAGRAM



- NOTES:
- S-1 : BAND SWITCH
(SHOWN IN BEACON BAND POSITION)
 - S-101: CB SWITCH
(SHOWN IN LOW POSITION)
 - S-2 : DF SWITCH
(SHOWN IN NORMAL RECEIVING POSITION)
 - S-3 : POWER SWITCH
 - S-4 : PL SWITCH
 - J-1 : HEAD PHONE JACK
 - J-2 : EAR PHONE JACK
 - J-3 : EXT POWER JACK