

## OPERATING INSTRUCTIONS

Once the appropriate antenna, speaker, microphone, and power connections have been made, the unit is ready for operation.

### RECEIVER OPERATION

Set the front panel switch (7) to the CB position. Turn the VOLUME/ON-OFF control (4) to turn the power on. With the VOLUME control at about its mid-position and the SQUELCH control (2) fully counterclockwise, noise and/or signals should be heard. The RX LAMP (1) should be lit.

The SQUELCH control should be slowly rotated clockwise to silence background noise or weak or undesirable signals. Set the VOLUME control to a comfortable listening level. In SSB modes, turn the NOISE BLANKER (8) on to cut out excessive noise.

Set the RF GAIN control (3) to its maximum clockwise position. Leave it in this position for normal reception. When excessively strong signals are received, reduce the setting for an indication of about 8 or 9 on the "S" METER (14). If reduced too much, the sensitivity will drop. Off-frequency transmission can be clarified by adjustment of the CLARIFIER control (6).

### PUBLIC ADDRESS (PA) OPERATION

With the PA speaker connected, set the PA/CB switch (7) to the PA position. This will silence the receiver and the PA system is now ready for use.

Press and hold down the Push-to-Talk (P-T-T) switch on the microphone. Hold the microphone two to three inches from your mouth and speak clearly in a normal tone of voice. If more audio power is desired, advance the VOLUME control (4) clockwise.

To return to the receive mode, release the P-T-T switch and set the PA/CB switch (7) back to CB.

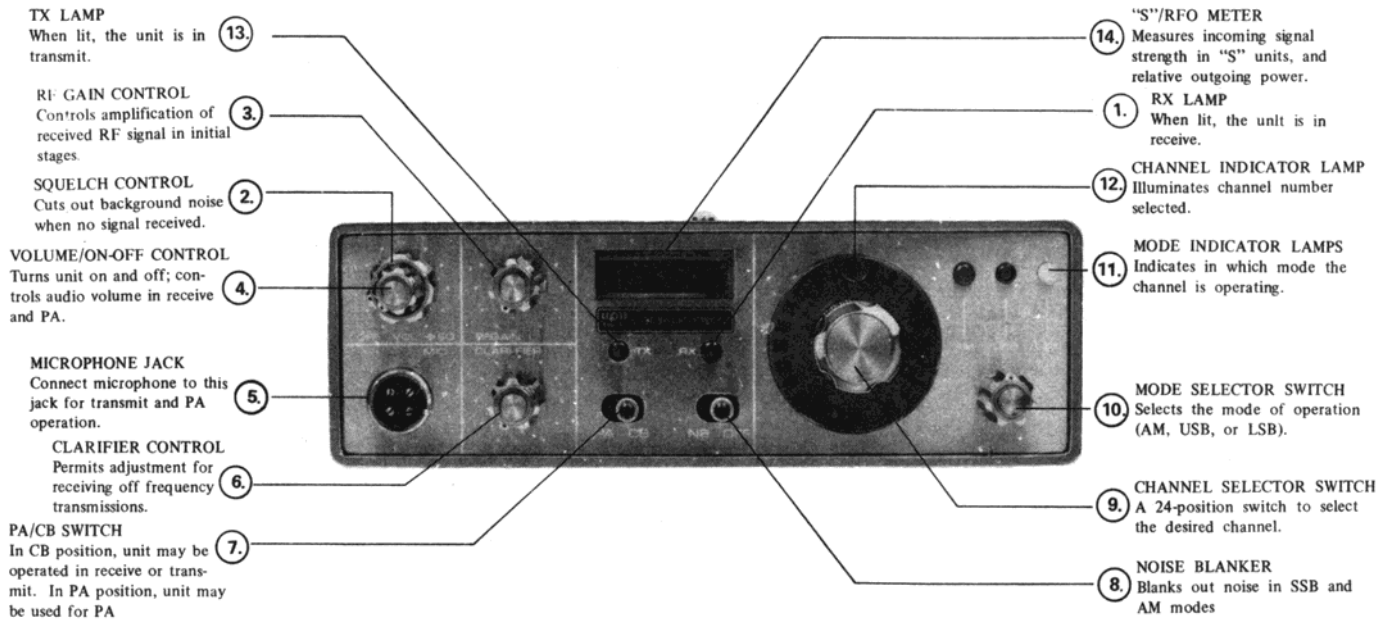
### TRANSMITTER OPERATION

Before transmitting, the desired communication channel should be monitored to avoid interruption of communication in process.

Make sure the PA/CB switch (7) is in the CB position, then press and hold down the P-T-T switch on the microphone. The TX LAMP (13) will light, which indicates that the transceiver is in the transmit mode.

Hold the microphone two to three inches from your mouth and speak clearly in a normal tone of voice and speed.

To receive, release the P-T-T switch.



## MAINTENANCE

No maintenance is required on the PACE SIDETALK 1000M other than to give it the care and treatment accorded any quality electronic equipment. The interior can be cleaned occasionally with a low pressure air hose or vacuum cleaner. To remove excessive dirt on the interior, clean carefully with a soft brush and alcohol and then dry thoroughly before operating.

In the event difficulty occurs, a qualified serviceman with proper instrumentation and service procedures should be engaged. An authorized PACE dealer or the factory can perform any service work.

## NOISE SUPPRESSION

When installed in a vehicle whose ignition system proves to be unusually noisy, local measures can be taken on the vehicle to reduce such noise. Consult your PACE dealer to determine the most economical method of suppressing the ignition noise. Usually simple suppression of spark plugs may suffice. However, more difficult cases may require special techniques. Sometimes generator and voltage regulator "hash" may be troublesome. Special capacitors, complete kits, and line filters are available depending upon requirements.

For additional information, write for PACE Noise-Suppression Booklet.

## PARTS LIST

Reference Number	Description	Part Number
<b>CAPACITORS*</b>		
C135, 335, 345 . . . . .	Mylar, 0.1 $\mu$ F . . . . .	IP 22-0047
C136, 227, 310, 311, 321, 323 thru 328, 340 thru 343, 346, 353 thru 356, 511, 609 . . . . .	Mylar, 0.04 $\mu$ F . . . . .	IP 22-0018
C141, 414 . . . . .	Variable, 10 pF . . . . .	IP 22-0045
C142 . . . . .	Electrolytic, 22 $\mu$ F/16 V . . . . .	IP 22-0042
C241 thru 246 . . . . .	Variable, 30 pF . . . . .	IP 22-0021
C247 thru 250 . . . . .	Variable, 40 pF . . . . .	IP 22-0046
C312, 318, 334, 338, 347, 350, 351, 352, 501, 502, 503, 604 . . . . .	Electrolytic, 1 $\mu$ F/50 V . . . . .	IP 22-0001
C348, 608 . . . . .	Electrolytic, 10 $\mu$ F/16 V . . . . .	IP 22-0004
C357, 507, 606, 607, 612, 613 . . . . .	Electrolytic, 0.22 $\mu$ F . . . . .	IP 22-0044
C415 . . . . .	Variable, 20 pF . . . . .	IP 22-0020
C506, 513, 517, 605 . . . . .	Electrolytic, 47 $\mu$ F/16 V . . . . .	IP 22-0006
C508, 509 . . . . .	Mylar, 0.02 $\mu$ F . . . . .	IP 22-0017
C510 . . . . .	Mylar, 0.005 $\mu$ F . . . . .	IP 22-0048
C514, 521, 522, 703, 704, 705 . . . . .	Electrolytic, 220 $\mu$ F/16 V . . . . .	IP 22-0009
C516, 520 . . . . .	Mylar, 0.047 $\mu$ F . . . . .	IP 22-0033
C519 . . . . .	Electrolytic, 470 $\mu$ F/16 V . . . . .	IP 22-0010
C610, 611 . . . . .	Electrolytic, 4.7 $\mu$ F/16 V . . . . .	IP 22-0003
C702 . . . . .	Electrolytic, 2200 $\mu$ F/16 V . . . . .	IP 22-0043
<b>RESISTORS*</b>		
R102 . . . . .	150 Ohm 1 W . . . . .	IP 23-0010
R103 . . . . .	200 Ohm 2 W . . . . .	IP 23-0011
R104 . . . . .	5.6 Ohm 1/2 W . . . . .	IP 23-0017
R105 . . . . .	100 Ohm 2 W . . . . .	IP 23-0012
R111 . . . . .	2.2 Ohm 1/2 W . . . . .	IP 23-0018
R129 . . . . .	Potentiometer, Trimmer, 100 k Ohm . . . . .	IP 24-0002
R130 . . . . .	Potentiometer, Trimmer, 10 k Ohm . . . . .	IP 24-0003
R218 . . . . .	100 Ohm 1 W . . . . .	IP 23-0013
R228 . . . . .	Potentiometer, Trimmer, 100 k Ohm . . . . .	IP 24-0013
R229 . . . . .	Potentiometer, Clarifier, 10 k Ohm-B . . . . .	IP 24-0001
R361 . . . . .	Potentiometer, Trimmer, 5 k Ohm . . . . .	IP 24-0035
R362 . . . . .	Potentiometer, RF Gain, 5 k Ohm-A . . . . .	IP 24-0036
R363 . . . . .	Potentiometer, Trimmer, 10 k Ohm . . . . .	IP 24-0005
R364, 520 . . . . .	Potentiometer, Trimmer, 50 k Ohm . . . . .	IP 24-0015
R414 . . . . .	Potentiometer, Trimmer, 500 Ohm . . . . .	IP 24-0023
R518 . . . . .	.5 Ohm 1 W . . . . .	IP 23-0014
R519, 521 . . . . .	Potentiometer, Concentric, VOLUME/SQUELCH w/Switch . . . . .	IP 24-0017
R616 . . . . .	Potentiometer, Trimmer, 1 k Ohm . . . . .	IP 24-0007
R701, 702 . . . . .	56 Ohm 1 W . . . . .	IP 23-0015
R703 . . . . .	33 Ohm 1 W . . . . .	IP 23-0016

## PARTS LIST (cont'd)

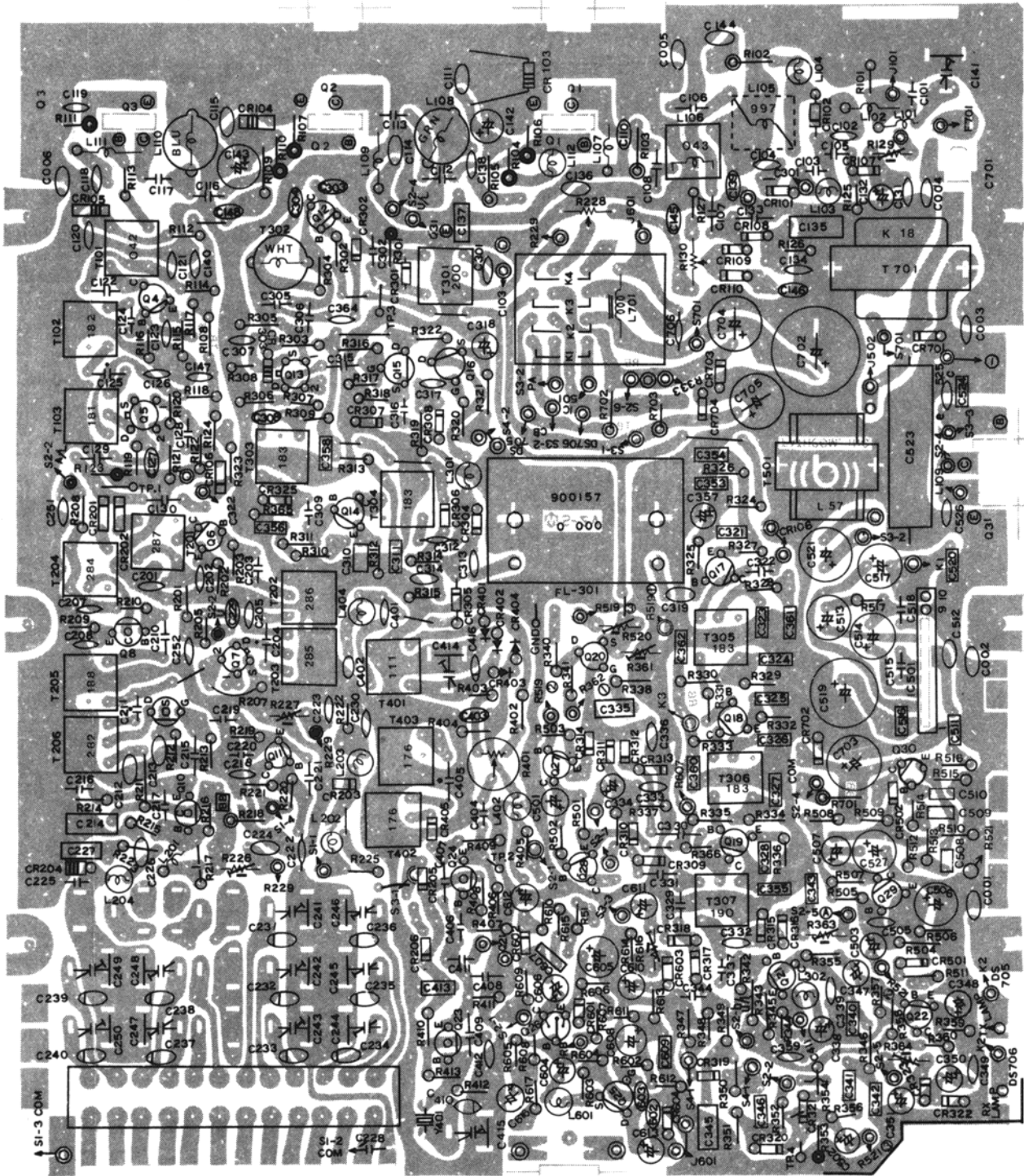
Reference Number	Description	Part Number
<b>INDUCTORS, CHOKES, AND TRANSFORMERS</b>		
L101, 109, 111 . . . . .	Choke, RF, .65 $\mu$ H . . . . .	IP 21-0071
L102, 107 . . . . .	Choke, RF, .22 $\mu$ H . . . . .	IP 21-0098
L103, 104, 302, 401 . . . . .	Choke, RF, 150 $\mu$ H . . . . .	IP 21-0074
L105 . . . . .	Coil, RF, C997N . . . . .	IP 21-0206
L106 . . . . .	Coil, RF, C043N . . . . .	IP 21-0095
L108 . . . . .	Coil, RF, C996N . . . . .	IP 21-0205
L110 . . . . .	Coil, RF, C979N . . . . .	IP 21-0180
L112 . . . . .	Choke, RF, 1.2 $\mu$ H . . . . .	IP 21-0179
L201 . . . . .	Choke, RF, 5.5 $\mu$ H . . . . .	IP 21-0101
L202 . . . . .	Choke, RF, 8.2 $\mu$ H . . . . .	IP 21-0180
L203, 204, 301 . . . . .	Choke, RF, 470 $\mu$ H . . . . .	IP 21-0195
L402 . . . . .	Choke, RF, 22 $\mu$ H . . . . .	IP 21-0072
T101 . . . . .	Transformer, RF, C042D . . . . .	IP 21-0093
T102 . . . . .	Transformer, RF, C182Z . . . . .	IP 21-0084
T103 . . . . .	Transformer, RF, C181Z . . . . .	IP 21-0083
T201 . . . . .	Transformer, RF, Z287A . . . . .	IP 21-0207
T202 . . . . .	Transformer, RF, Z286K . . . . .	IP 21-0208
T203 . . . . .	Transformer, RF, Z285I . . . . .	IP 21-0209
T204 . . . . .	Transformer, RF, Z284A . . . . .	IP 21-0210
T205 . . . . .	Transformer, RF, Z188A . . . . .	IP 21-0087
T206 . . . . .	Transformer, RF, Z282I . . . . .	IP 21-0211
T301 . . . . .	Transformer, RF, C200Z . . . . .	IP 21-0091
T302 . . . . .	Transformer, RF, C993N . . . . .	IP 21-0212
T303 thru 306 . . . . .	Transformer, IF, S-183A . . . . .	IP 21-0085
T307 . . . . .	Transformer, IF, S-190A . . . . .	IP 21-0089
T401 . . . . .	Transformer, IF, S-111D . . . . .	IP 21-0092
T402, 403 . . . . .	Transformer, RF, Z176I . . . . .	IP 21-0078
T501, 502 . . . . .	Transformer, AF, L-57 . . . . .	IP 21-0186
T701 . . . . .	Choke, AF, K-18 . . . . .	IP 21-0112
<b>DIODES, INTEGRATED CIRCUITS, AND TRANSISTORS</b>		
CR101, 102 . . . . .	Diode, 10D-4 . . . . .	IP 20-0022
CR103, 104, 105 . . . . .	Diode, 1S990S . . . . .	IP 20-0018
CR106, 201, 202, 205, 206, 306, 310, 311, 312, 314, 319, 320, 321, 405, 602 . . . . .	Diode, WG-713 . . . . .	IP 20-0145
CR107 thru 110, 307, 308, 309, 313, 315 thru 318, 322, 323, 501, 601, 603 . . . . .	Diode, 1N60 . . . . .	IP 20-0060
CR203 . . . . .	Diode, ITT 310 . . . . .	IP 20-0151
CR204, 303 . . . . .	Diode, 1S1007 . . . . .	IP 20-0020
CR301, 302 . . . . .	Diode, 1S2472 . . . . .	IP 20-0021
CR304, 305, 401 thru 404 . . . . .	Diode, 1N60P . . . . .	IP 20-0016
CR502, 701 . . . . .	Diode, 1N4004 . . . . .	IP 20-0025
CR702, 703, 704 . . . . .	Diode, BZ090 . . . . .	IP 20-0019
IC501 . . . . .	Integrated Circuit, TA7205P . . . . .	IP 20-0161

## PARTS LIST (cont'd)

Reference Number	Description	Part Number
Q1 . . . . .	Transistor, 2SC1307 . . . . .	IP 20-0154
Q2 . . . . .	Transistor, 2SC306 (1) . . . . .	IP 20-0155
Q3 . . . . .	Transistor, 2SC1449 (1) . . . . .	IP 20-0156
Q4, 6, 8, 10, 11, 14, 17, 18, 19, 21, 23, 24 . . . . .	Transistor, 2SC710C . . . . .	IP 20-0002
Q5, 7, 13 . . . . .	Transistor, 3SK45B . . . . .	IP 20-0157
Q9, 20 . . . . .	Transistor, 2SK19GR . . . . .	IP 20-0012
Q12 . . . . .	Transistor, 2SC710B . . . . .	IP 20-0001
Q15, 16, 25 . . . . .	Transistor, 2SK30 . . . . .	IP 20-0078
	Transistor, 2SK40 (Alternate) . . . . .	IP 20-0162
Q22, 27, 29, 30 . . . . .	Transistor, 2SC372Y . . . . .	IP 20-0006
Q26 . . . . .	Transistor, 2SD187Y . . . . .	IP 20-0160
Q28 . . . . .	Transistor, 2SA495Y . . . . .	IP 20-0159
<b>MISCELLANEOUS</b>		
DS701 thru 707 . . . . .	Lamps, Indicator . . . . .	IP 28-0009
FL301 . . . . .	Filter, FX07800 Crystal . . . . .	IP 31-0047
J101 . . . . .	Jack, Antenna . . . . .	IP 26-0013
J501, 502 . . . . .	Jack, Earphone . . . . .	IP 26-0005
J601 . . . . .	Jack, Microphone . . . . .	IP 26-0014
K1-4, L701 . . . . .	Relay, 12 V DC . . . . .	IP 32-0005
M1 . . . . .	Meter, S/RF . . . . .	IP 27-0007
S1 . . . . .	Switch, Channel Selector . . . . .	IP 25-0037
S2 . . . . .	Switch, Mode . . . . .	IP 25-0038
S3 . . . . .	Switch, PA/CB . . . . .	IP 25-0034
S4 . . . . .	Switch, NB ON-OFF . . . . .	IP 25-0036
YH1 . . . . .	Holder (12-Crystal) . . . . .	IP 34-0004
Y201 . . . . .	Crystal, 11.740 MHz . . . . .	IP 31-0058
Y202 . . . . .	Crystal, 11.790 MHz . . . . .	IP 31-0059
Y203 . . . . .	Crystal, 11.840 MHz . . . . .	IP 31-0060
Y204 . . . . .	Crystal, 11.890 MHz . . . . .	IP 31-0061
Y205 . . . . .	Crystal, 11.940 MHz . . . . .	IP 31-0062
Y206 . . . . .	Crystal, 11.990 MHz . . . . .	IP 31-0063
Y207 . . . . .	Crystal, 7.4225 MHz . . . . .	IP 31-0064
Y208 . . . . .	Crystal, 7.4325 MHz . . . . .	IP 31-0065
Y209 . . . . .	Crystal, 7.4425 MHz . . . . .	IP 31-0066
Y210 . . . . .	Crystal, 7.4625 MHz . . . . .	IP 31-0067
Y410 . . . . .	Crystal, 7.8025 MHz . . . . .	IP 31-0068
	Knob (Mode, Clarifier, RF Gain) . . . . .	IP 30-0094
	Knob, Inner (VOLUME) . . . . .	IP 30-0092
	Knob, Outer (SQUELCH) . . . . .	IP 30-0093
	Dial, Channel . . . . .	IP 30-0122
	Cover, Upper . . . . .	IP 30-0120
	Cover, Lower . . . . .	IP 30-0121
	Bracket, Mobile Mount . . . . .	IP 30-0117
	Lens, Red TX . . . . .	IP 30-0123
	Lens, Green RX . . . . .	IP 30-0124
	Lens, Blue AM . . . . .	IP 30-0125
	Lens, Amber USB . . . . .	IP 30-0126
	Lens, White LSB . . . . .	IP 30-0127
	Microphone w/Cord and Plug . . . . .	IP 29-0016
	Speaker, 2 W 8 Ohm . . . . .	IP 29-0017
	Bezel . . . . .	IP 30-0119
	Panel, Front . . . . .	IP 30-0128

\* Order unlisted parts by description and reference number.

# PARTS LOCATOR





### CITIZENS RADIO SERVICE

CLASS D FCC Part 95  
(5 Watt Input Limitation)

Ch.	Freq.	Limitation
1	26.965	Calling own station
2	26.975	"
3	26.985	"
4	27.005	"
5	27.015	"
6	27.025	"
7	27.035	"
8	27.055	"
9	27.065	Emergency Calling
10	27.075	any station
11	27.085	"
12	27.105	"
13	27.115	"
14	27.125	"
15	27.135	"
16	27.155	Calling own station
17	27.165	"
18	27.175	"
19	27.185	"
20	27.205	"
21	27.215	"
22	27.225	"
23	27.255	any station (shared)

This radio service requires a license obtained by filling FCC Form 505.

**(P)**

**PACE**

**TWO-WAY RADIO PRODUCTS  
by PATHCOM INC.**

L2023-575

PACE COMMUNICATIONS  
DIVISION OF PATHCOM INC.  
24049 S. FRAMPTON AVENUE  
HARBOR CITY, CALIF. 90710

PRINTED IN JAPAN