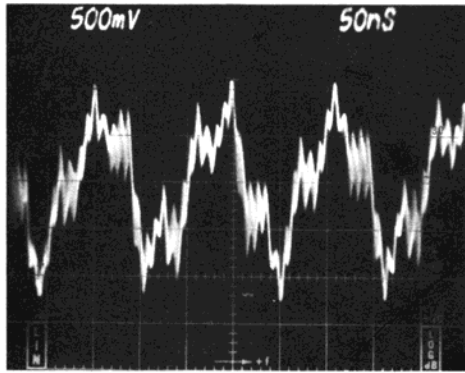
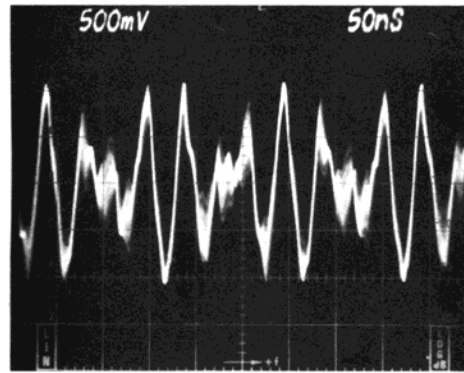


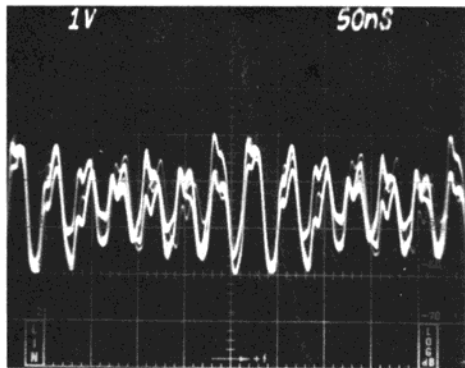
FIG. 5-12 TRANSMITTER ALIGNMENT WAVEFORMS



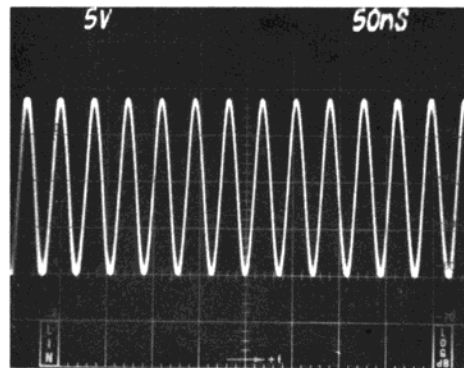
(a) TX Mixer Q20, Gate #1 15



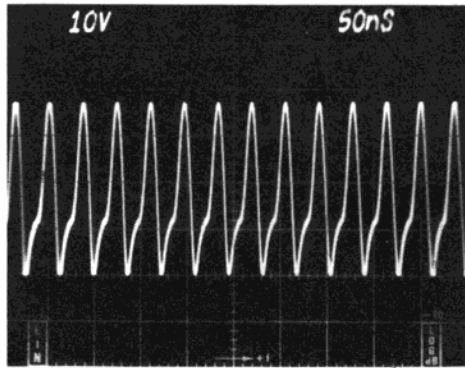
(b) TX Mixer Q20, Gate #2 16



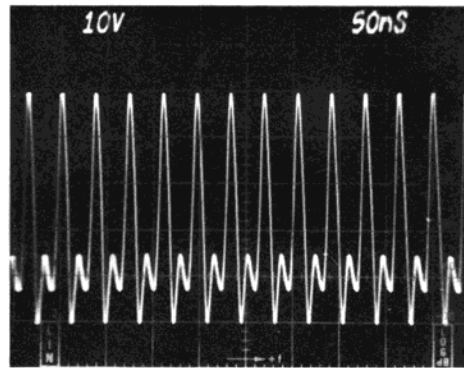
(c) TX Mixer Q20, Drain 17



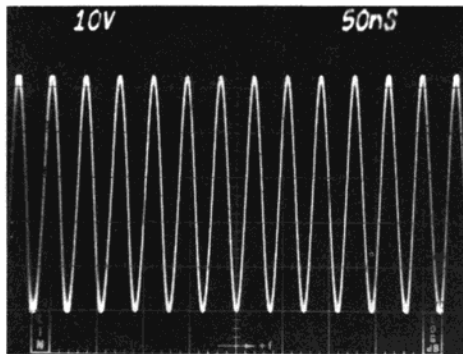
(d) TX Buffer Q21, Collector 18



(e) TX Driver Q22, Collector 19



(f) TX Final Q23, Collector 20



(g) Output Dummy Load

## TRANSMITTER ALIGNMENT PROCEDURE (cont.)

### STEP 9

Adjust ALC VR1 for 12 watts output.

### STEP 10

Set audio oscillator level to 0. Key transmitter in AM. If output power exceeds 4 watts, install an additional diode (10D4, SBE-8000-00011-0041) in series with those already present on the bottom of PCB near relay RL1.

### STEP 11

Adjust VR2 until RFO METER reads the same as wattmeter.

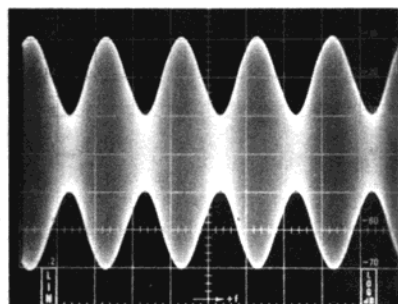
### STEP 12

Adjust the audio oscillator's level for 50% modulation. Read level on AC voltmeter and increase level until the AC voltmeter reads 8 times as great (about 18db). Adjust VR7 for 95-100% modulation.

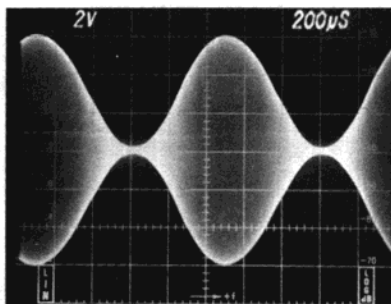
### STEP 13

Key the transmitter in LSB. Adjust VR6 and CV12 for minimum indication on the oscilloscope (about .05V P-P).

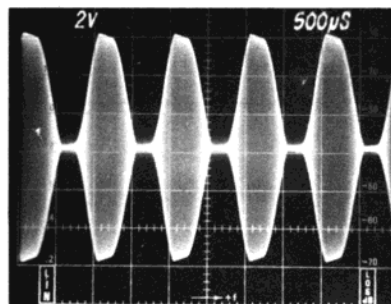
FIG. 5-13 MODULATION WAVEFORMS



50% Modulation



100% Modulation



Overmodulation

FIG. 5-14 COMPONENT LOCATION

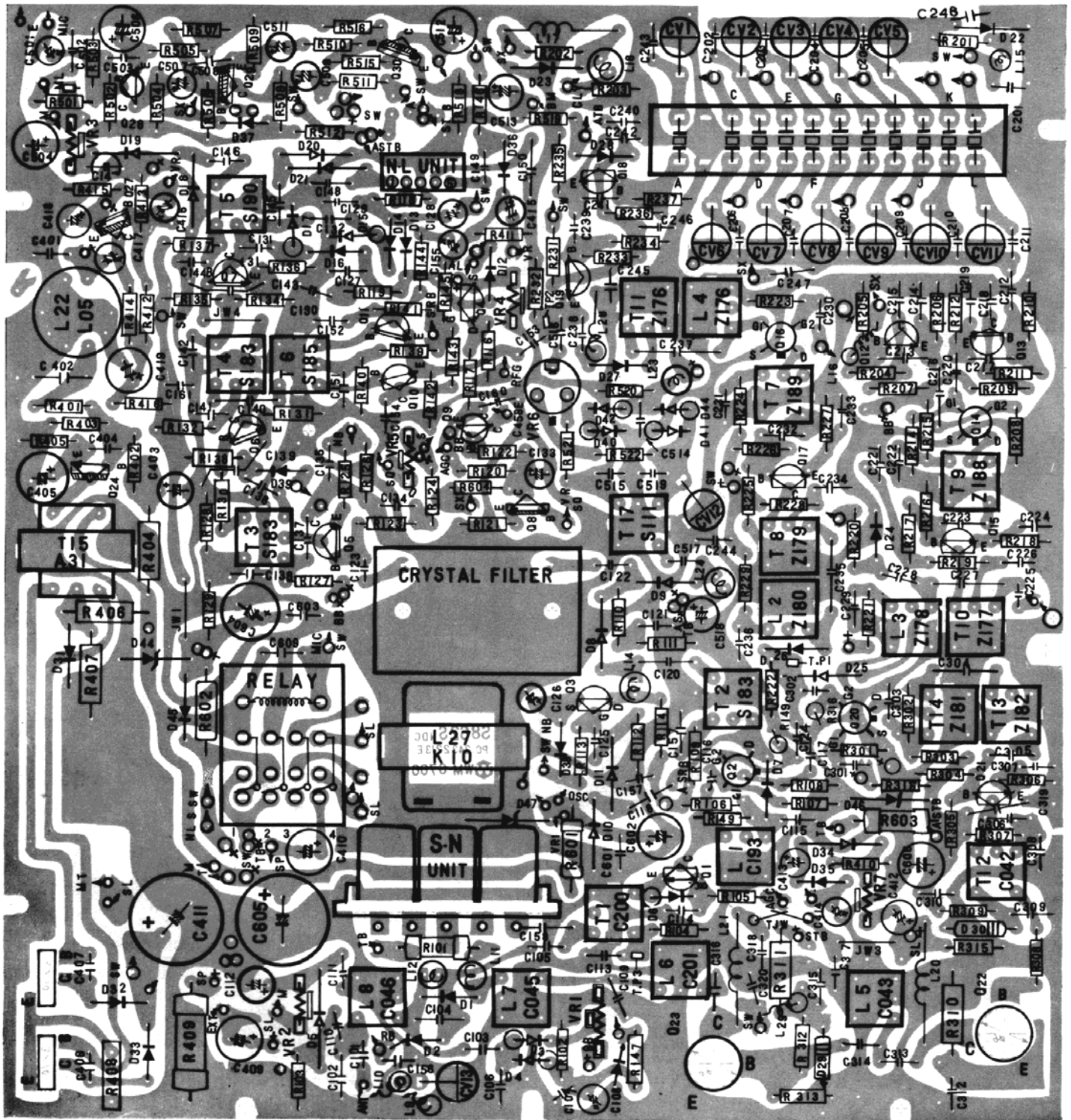
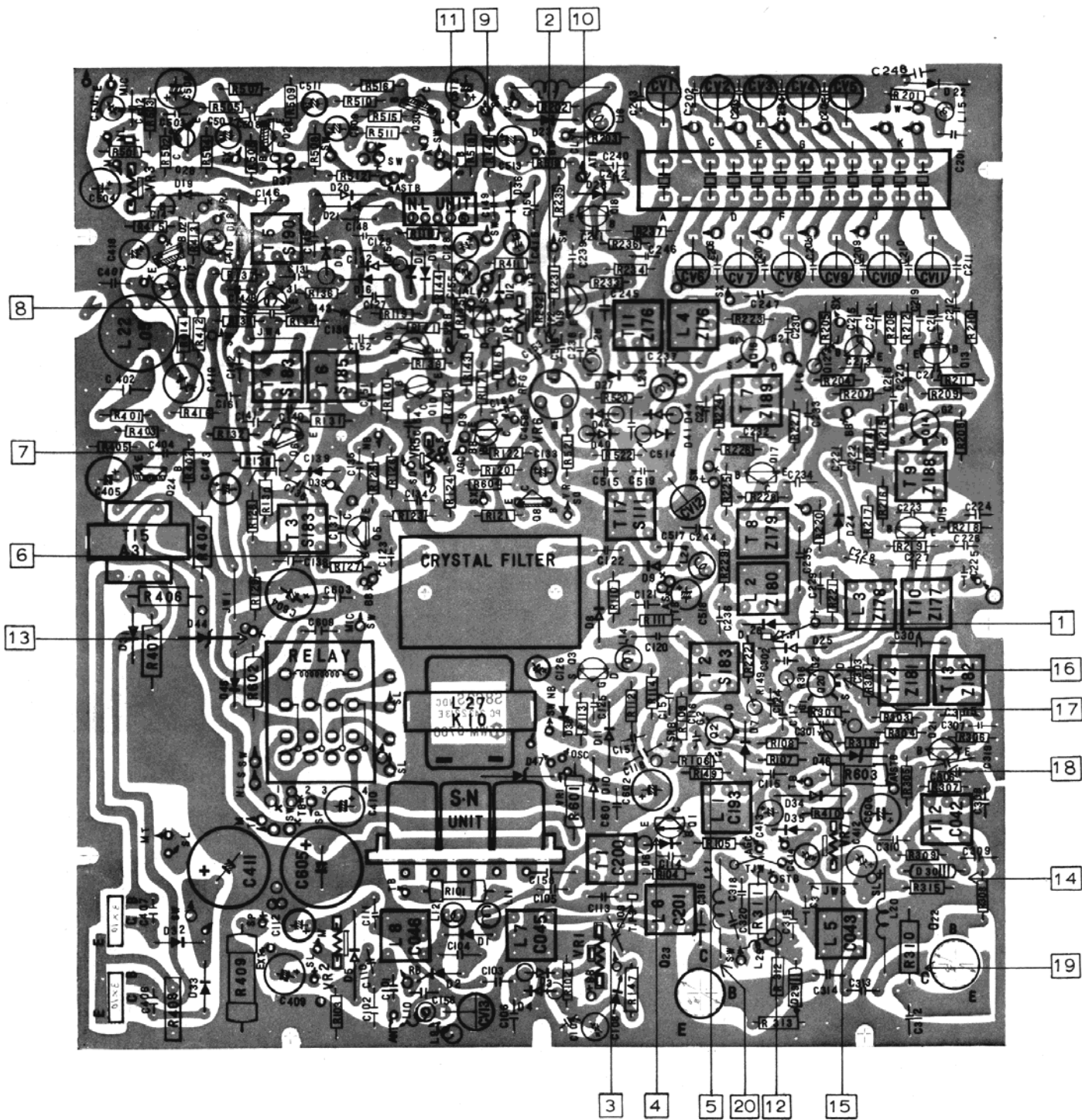


FIG. 5-15 TEST POINT LOCATION



## SBE-12CB SIDEBANDER II PARTS LIST

<u>SYMBOL #</u>	<u>PART #</u>	<u>DESCRIPTION</u>
C101	8000-00004-001	Capacitor, Fixed, .01mfd, 50V, Cer.
C102	8000-00004-041	Capacitor, Fixed, 150pfd, 50V, Mica
C103	8000-00004-007	Capacitor, Fixed, 10pfd, 50V, Mica
C104	8000-00004-027	Capacitor, Fixed, 220pfd, 50V, Mica
C105	8000-00004-001	Capacitor, Fixed, .01mfd, 50V, Cer.
C106	8000-00004-021	Capacitor, Fixed, 47pfd, 50V, Mica
C107	8000-00004-001	Capacitor, Fixed, .01mfd, 50V, Cer.
C108	8000-00004-018	Capacitor, Fixed, 0.1mfd, 50V, Mylar
C109	8000-00011-010	Capacitor, Fixed, 170pfd, 50V, Mica
C110	8000-00004-040	Capacitor, Fixed, 3pfd, 50V, Mica
C111	8000-00004-001	Capacitor, Fixed, .01mfd, 50V, Cer.
C112	8000-00004-042	Capacitor, Fixed, 1.0mfd, 16V, Elect.
C113	8000-00004-001	Capacitor, Fixed, .01mfd, 50V, Cer.
C114	8000-00004-001	Capacitor, Fixed, .01mfd, 50V, Cer.
C115	8000-00004-001	Capacitor, Fixed, .01mfd, 50V, Cer.
C116	8000-00004-007	Capacitor, Fixed, 10pfd, 50V, Mica
C117	8000-00004-001	Capacitor, Fixed, .01mfd, 50V, Cer.
C118	8000-00004-020	Capacitor, Fixed, 100pfd, 50V, Mica
C119	8000-00004-001	Capacitor, Fixed, .01mfd, 50V, Cer.
C120	8000-00004-011	Capacitor, Fixed, .001mfd, 50V, Cer.
C121	8000-00004-001	Capacitor, Fixed, .01mfd, 50V, Cer.
C122	8000-00004-011	Capacitor, Fixed, .001mfd, 50V, Cer.
C123	8000-00004-011	Capacitor, Fixed, .001mfd, 50V, Cer.
C124	8000-00004-040	Capacitor, Fixed, 3pfd, 50V, Mica
C125	8000-00004-011	Capacitor, Fixed, .001mfd, 50V, Cer.
C126	8000-00004-042	Capacitor, Fixed, 1.0mfd, 16V, Elect.
C127	8000-00004-001	Capacitor, Fixed, .01mfd, 50V, Cer.
C128	8000-00004-042	Capacitor, Fixed, 1.0mfd, 16V, Elect.
C129	8000-00004-003	Capacitor, Fixed, .04mfd, 50V, Mylar
C130	8000-00004-018	Capacitor, Fixed, .1mfd, 50V, Mylar
C131	8000-00011-008	Capacitor, Fixed, 5pfd, 50V, Mica
C132	8000-00011-008	Capacitor, Fixed, 5pfd, 50V, Mica
C133	8000-00011-002	Capacitor, Fixed, 2.2mfd, 16V, Elect.
C134	8000-00004-001	Capacitor, Fixed, .01mfd, 50V, Cer.
C135	8000-00004-001	Capacitor, Fixed, .01mfd, 50V, Cer.
C136	8000-00004-002	Capacitor, Fixed, 15pfd, 50V, Mica
C137	8000-00004-001	Capacitor, Fixed, .01mfd, 50V, Cer.
C138	8000-00004-001	Capacitor, Fixed, .01mfd, 50V, Cer.
C139	8000-00004-003	Capacitor, Fixed, .04mfd, 50V, Mylar
C140	8000-00011-012	Capacitor, Fixed, 1pfd, 50V,
C141	8000-00004-001	Capacitor, Fixed, .01mfd, 50V, Cer
C142	8000-00004-001	Capacitor, Fixed, .01mfd, 50V, Cer.
C143	8000-00004-003	Capacitor, Fixed, .04mfd, 50V, Mylar
C144	8000-00004-001	Capacitor, Fixed, .01mfd, 50V, Cer.
C145	8000-00004-021	Capacitor, Fixed, 47pfd, 50V, Mica
C146	8000-00004-011	Capacitor, Fixed, .001mfd, 50V, Cer.
C147	8000-00004-042	Capacitor, Fixed, 1.0mfd, 16V, Elect.
C148	8000-00004-020	Capacitor, Fixed, 100pfd, 50V, Mica
C149	8000-00011-007	Capacitor, Fixed, .001mfd, 50V, Mylar
C150	8000-00004-018	Capacitor, Fixed, .1mfd, 50V, Mylar
C151	8000-00004-001	Capacitor, Fixed, .01mfd, 50V, Cer.
C152	8000-00004-001	Capacitor, Fixed, .01mfd, 50V, Cer.

<u>SYMBOL #</u>	<u>PART #</u>	<u>DESCRIPTION</u>
C153	8000-00004-002	Capacitor, Fixed, 15pfd, 50V, Mica
C154	8000-00004-001	Capacitor, Fixed, .01mfd, 50V, Cer.
C155	8000-00004-042	Capacitor, Fixed, 1.0mfd, 16V, Elect.
C156	8000-00004-001	Capacitor, Fixed, .01mfd, 50V, Cer.
C157	8000-00004-001	Capacitor, Fixed, .01mfd, 50V, Cer.
C158	8000-00004-020	Capacitor, Fixed, 30pfd, 50V, Mica
C160	8000-00004-003	Capacitor, Fixed, .04mfd, 50V, Mylar
C161	8000-00004-003	Capacitor, Fixed, .04mfd, 50V, Mylar
C162	8000-00004-016	Capacitor, Fixed, 20pfd, 50V, Mica
C201	8000-00004-001	Capacitor, Fixed, .01mfd, 50V, Cer.
C202	8000-00004-010	Capacitor, Fixed, N750, 22pfd, 50V, Cer.
C203	8000-00004-010	Capacitor, Fixed, N750, 22pfd, 50V, Cer.
C204	8000-00004-010	Capacitor, Fixed, N750, 22pfd, 50V, Cer.
C205	8000-00004-010	Capacitor, Fixed, N750, 22pfd, 50V, Cer.
C206	8000-00004-022	Capacitor, Fixed, N470, 30pfd, 50V, Cer.
C207	8000-00004-022	Capacitor, Fixed, N470, 30pfd, 50V, Cer.
C208	8000-00004-022	Capacitor, Fixed, N470, 30pfd, 50V, Cer.
C209	8000-00004-022	Capacitor, Fixed, N470, 30pfd, 50V, Cer.
C210	8000-00004-022	Capacitor, Fixed, N470, 30pfd, 50V, Cer.
C211	8000-00004-022	Capacitor, Fixed, N470, 30pfd, 50V, Cer.
C212	8000-00004-011	Capacitor, Fixed, .001mfd, 50V, Cer.
C213	8000-00011-011	Capacitor, Fixed, 300pfd, 50V, Mica
C214	8000-00004-020	Capacitor, Fixed, 100pfd, 50V, Mylar
C215	8000-00004-001	Capacitor, Fixed, .01mfd, 50V, Cer.
C216	8000-00011-008	Capacitor, Fixed, 5pfd, 50V, Mica
C217	8000-00011-011	Capacitor, Fixed, 300pfd, 50V, Mica
C218	8000-00004-020	Capacitor, Fixed, 100pfd, 50V, Mica
C219	8000-00004-001	Capacitor, Fixed, .01mfd, 50V, Cer.
C220	8000-00011-008	Capacitor, Fixed, 5pfd, 50V, Mica
C221	8000-00004-001	Capacitor, Fixed, .01mfd, 50V, Cer.
C222	8000-00004-001	Capacitor, Fixed, .01mfd, 50V, Cer.
C223	8000-00004-027	Capacitor, Fixed, 220 pfd, 50V, Mica
C224	8000-00004-001	Capacitor, Fixed, .01mfd, 50V, Cer.
C225	8000-00004-013	Capacitor, Fixed, 2pfd, 50V, Mica
C226	8000-00004-001	Capacitor, Fixed, .01mfd, 50V, Cer
C228	8000-00004-001	Capacitor, Fixed, .01mfd, 50V, Cer.
C229	8000-00004-001	Capacitor, Fixed, .01mfd, 50V, Cer.
C230	8000-00011-008	Capacitor, Fixed, 5pfd, 50V, Mica
C231	8000-00004-001	Capacitor, Fixed, .01mfd, 50V, Cer.
C232	8000-00011-009	Capacitor, Fixed, 56pfd, 50V, Mica
C233	8000-00004-001	Capacitor, Fixed, .01mfd, 50V, Cer
C234	8000-00004-001	Capacitor, Fixed, .01mfd, 50V, Cer.
C235	8000-00011-012	Capacitor, Fixed, 1pfd, 500V
C236	8000-00004-001	Capacitor, Fixed, .01mfd, 50V, Cer.
C237	8000-00004-040	Capacitor, Fixed, 3pfd, 50V, Mica
C238	8000-00004-002	Capacitor, Fixed, 15pfd, 50V, Mica
C239	8000-00004-002	Capacitor, Fixed, 15pfd, 50V, Mica
C240	8000-00004-001	Capacitor, Fixed, .01mfd, 50V, Cer.
C241	8000-00004-017	Capacitor, Fixed, 500pfd, 50V, Mica
C242	8000-00004-041	Capacitor, Fixed, 150pfd, 50V, Mica
C243	8000-00004-010	Capacitor, Fixed, N750, 22pfd, 50V, Cer.
C244	8000-00004-001	Capacitor, Fixed, .01mfd, 50V, Cer.
C245	8000-00004-001	Capacitor, Fixed, .01mfd, 50V, Cer.
C246	8000-00004-001	Capacitor, Fixed, .01mfd, 50V, Cer.

<u>SYMBOL #</u>	<u>PART #</u>	<u>DESCRIPTION</u>
C301	8000-00004-024	Capacitor, Fixed, 30pfd, 50V, Mica
C302	8000-00004-007	Capacitor, Fixed, 10pfd, 50V, Mica
C303	8000-00004-001	Capacitor, Fixed, .01mfd, 50V, Cer.
C304	8000-00011-Q13	Capacitor, Fixed, 2pfd, 500V
C305	8000-00004-027	Capacitor, Fixed, 220pfd, 50V, Mica
C306	8000-00004-020	Capacitor, Fixed, 100pfd, 50V, Mica
C307	8000-00004-001	Capacitor, Fixed, .01mfd, 50V, Cer.
C308	8000-00004-001	Capacitor, Fixed, .01mfd, 50V, Cer.
C309	8000-00004-001	Capacitor, Fixed, .01mfd, 50V, Cer.
C310	8000-00004-001	Capacitor, Fixed, .01mfd, 50V, Cer.
C311	8000-00004-043	Capacitor, Fixed, .047mfd, 50V, Cer.
C312	8000-00004-001	Capacitor, Fixed, .01mfd, 50V, Cer.
C313	8000-00011-009	Capacitor, Fixed, 56pfd, 50V, Mica
C314	8000-00004-041	Capacitor, Fixed, 150pfd, 50V, Mica
C315	8000-00004-001	Capacitor, Fixed, .01mfd, 50V, Cer.
C316	8000-00004-001	Capacitor, Fixed, .01mfd, 50V, Cer.
C317	8000-00004-001	Capacitor, Fixed, .01mfd, 50V, Cer.
C318	8000-00004-001	Capacitor, Fixed, .01mfd, 50V, Cer.
C319	8000-00004-001	Capacitor, Fixed, .01mfd, 50V, Cer.
C320	8000-00004-001	Capacitor, Fixed, .01mfd, 50V, Cer.
C321	8000-00004-001	Capacitor, Fixed, .01mfd, 50V, Cer.
C401	8000-00004-015	Capacitor, Fixed, .05mfd, 50V, Mylar
C402	8000-00004-018	Capacitor, Fixed, .1mfd, 50V, Mylar
C403	8000-00004-047	Capacitor, Fixed, 10mfd, 16V, Elect.
C404	8000-00004-011	Capacitor, Fixed, .001mfd, 50V, Cer.
C405	8000-00004-044	Capacitor, Fixed, 220mfd, 16V, Elect.
C408	8000-00004-001	Capacitor, Fixed, .01mfd, 50V, Cer.
C409	8000-00004-009	Capacitor, Fixed, 47mfd, 16V, Elect.
C410	8000-00004-009	Capacitor, Fixed, 47mfd, 16V, Elect.
C411	8000-00011-015	Capacitor, Fixed, 470mfd, 35V, Elect.
C412	8000-00011-014	Capacitor, Fixed, 4.7mfd, 35V, Elect.
C413	8000-00004-030	Capacitor, Fixed, 4.7mfd, 16V, Elect.
C414	8000-00004-047	Capacitor, Fixed, 10mfd, 16V, Elect.
C415	8000-00004-042	Capacitor, Fixed, 1.0mfd, 16V, Elect.
C416	8000-00004-042	Capacitor, Fixed, 1.0mfd, 16V, Elect.
C417	8000-00004-045	Capacitor, Fixed, .22mfd, 16V, Elect.
C418	8000-00011-003	Capacitor, Fixed, 33mfd, 16V, Elect.
C419	8000-00004-009	Capacitor, Fixed, 47mfd, 16V, Elect.
C501	8000-00004-042	Capacitor, Fixed, 1.0mfd, 16V, Elect.
C502	8000-00011-006	Capacitor, Fixed, .1mfd, 12V
C503	8000-00004-001	Capacitor, Fixed, .01mfd, 50V, Cer.
C504	8000-00004-009	Capacitor, Fixed, 47mfd, 16V, Elect.
C505	8000-00004-011	Capacitor, Fixed, .001mfd, 50V, Cer.
C506	8000-00011-003	Capacitor, Fixed, 33mfd, 16V, Elect.
C507	8000-00004-042	Capacitor, Fixed, 1.0mfd, 16V, Elect.
C508	8000-00004-001	Capacitor, Fixed, .01mfd, 50V, Cer.
C509	8000-00004-042	Capacitor, Fixed, 1.0mfd, 16V, Elect.
C511	8000-00004-042	Capacitor, Fixed, 1.0mfd, 16V, Elect.
C512	8000-00004-009	Capacitor, Fixed, 47mfd, 16V, Elect.
C513	8000-00004-042	Capacitor, Fixed, 1.0mfd, 16V, Elect.
C514	8000-00004-001	Capacitor, Fixed, .01mfd, 50V, Cer.
C516	8000-00004-020	Capacitor, Fixed, 100pfd, 50V, Mica
C517	8000-00004-011	Capacitor, Fixed, .001mfd, 50V, Cer.

<u>SYMBOL #</u>	<u>PART #</u>	<u>DESCRIPTION</u>
C518	8000-00004-047	Capacitor, Fixed, 10mfd, 16V, Elect.
C601	8000-00004-001	Capacitor, Fixed, .01mfd, 50V, Cer.
C602	8000-00004-044	Capacitor, Fixed, 220mfd, 16V, Elect.
C603	8000-00004-001	Capacitor, Fixed, .01mfd, 50V, Cer.
C604	8000-00004-046	Capacitor, Fixed, 100mfd, 16V, Elect.
C605	8000-00004-049	Capacitor, Fixed, 1000mfd, 16V, Elect.
C606	8000-00004-009	Capacitor, Fixed, 47mfd, 16V, Elect.
C607	8000-00004-001	Capacitor, Fixed, .01mfd, 50V, Cer.
C608	8000-00004-048	Capacitor, Fixed, .001mfd, Feed-Thru
C609	8000-00004-001	Capacitor, Fixed, .01mfd, 50V, Cer.
CV1	8000-00004-050	Capacitor, 20pfd, Variable
CV2	8000-00004-050	Capacitor, 20pfd, Variable
CV3	8000-00004-050	Capacitor, 20pfd, Variable
CV4	8000-00004-050	Capacitor, 20pfd, Variable
CV5	8000-00004-050	Capacitor, 20pfd, Variable
CV6	8000-00004-051	Capacitor, 30pfd, Variable
CV7	8000-00004-051	Capacitor, 30pfd, Variable
CV8	8000-00004-051	Capacitor, 30pfd, Variable
CV9	8000-00004-051	Capacitor, 30pfd, Variable
CV10	8000-00004-051	Capacitor, 30pfd, Variable
CV11	8000-00004-051	Capacitor, 30pfd, Variable
CV12	8000-00004-204	Capacitor, 10pfd, Variable
CV13	8000-00004-204	Capacitor, 10pfd, Variable
D1	8000-00011-041	Diode, 10D-4
D2	8000-00011-041	Diode, 10D-4
D3	8000-00004-060	Diode, 1N34A
D4	8000-00004-060	Diode, 1N34A
D5	8000-00004-060	Diode, 1N34A
D6	8000-00004-060	Diode, 1N34A
D7	8000-00011-046	Diode, 1S-1007
D8	8000-00004-063	Diode, 1N60P
D9	8000-00004-060	Diode, 1N34A
D10	8000-00004-060	Diode, 1N34A
D11	8000-00004-060	Diode, 1N34A
D12	8000-00011-042	Diode, 1S-2472
D13	8000-00011-042	Diode, 1S-2472
D14	8000-00011-042	Diode, 1S2472
D15	8000-00004-060	Diode, 1N34A
D16	8000-00011-042	Diode, 1S2472
D17	8000-00004-060	Diode, 1N34A
D18	8000-00004-060	Diode, 1N34A
D19	8000-00004-060	Diode, 1N34A
D20	8000-00004-060	Diode, 1N34A
D21	8000-00004-060	Diode, 1N34A
D22	8000-00011-046	Diode, 1S-1007
* D23	8000-00004-248	Diode, 1S-352M
D24	8000-00011-042	Diode, 1S-2472
D25	8000-00004-060	Diode, 1N34A
D26	8000-00011-042	Diode, 1S-2472
D27	8000-00011-042	Diode, 1S2472
D28	8000-00011-042	Diode, 1S-2472



<u>SYMBOL #</u>	<u>PART #</u>	<u>DESCRIPTION</u>
D29	8000-00004-184	Diode, 1S-990S
D30	8000-00004-184	Diode, 1S-990S
D31	8000-00011-045	Diode, 1S-1211
D32	8000-00011-041	Diode, 10D-4
D33	8000-00011-041	Diode, 10D-4
D34	8000-00004-060	Diode, 1N34A
D35	8000-00011-044	Diode, VD1210
D36	8000-00011-042	Diode, 1S-2472
D37	8000-00011-042	Diode, 1S-2472
D38	8000-00011-042	Diode, 1S-2472
D39	8000-00011-042	Diode, 1S-2472
D40	8000-00004-063	Diode, 1N60P
D41	8000-00004-063	Diode, 1N60P
D42	8000-00004-063	Diode, 1N60P
D43	8000-00004-063	Diode, 1N60P
D44	8000-00011-043	Diode, BZ-090
D45	8000-00011-042	Diode, 1S-2472
D46	8000-00011-043	Diode, BZ-090
D47	8000-00011-043	Diode, BZ-090
D48	8000-00011-041	Diode, 10D-4
FL1	8000-00011-071	Filter, 7.8 MHz
J1	8000-00004-069	Connector, Socket, Antenna
J2	8000-00004-070	Connector, Microphone Chassis Mount
J3	8000-00004-072	Connector, External Jack, Speaker
J4	8000-00004-071	Connector, P.A. Jack
L1	8000-00011-023	Coil, 27 MHz
L2	8000-00011-024	Coil, 34 MHz
L3	8000-00011-025	Coil, 19 MHz
L4	8000-00011-026	Coil, 15 MHz
L5	8000-00004-075	Coil, 27 MHz
L6	8000-00011-027	Coil, 27 MHz
L7	8000-00004-077	Coil, 27 MHz
L8	8000-00004-078	Coil, 27 MHz
L9	8000-00004-053	Choke, 22 $\mu$ h
L10	8000-00004-059	Choke, 0.85 $\mu$ h
L11	8000-00011-018	Choke, RF 150 $\mu$ h
L12	8000-00011-018	Choke, RF 150 $\mu$ h
L14	8000-00011-020	Choke, RF 470 $\mu$ h
L15	8000-00011-020	Choke, RF 470 $\mu$ h
L16	8000-00011-017	Choke, 5.5 $\mu$ h
L17	8000-00011-016	Choke, 0.22 $\mu$ h
L18	8000-00011-020	Choke, RF 470 $\mu$ h
L20	8000-00004-205	Choke, 1 $\mu$ h
L21	8000-00011-016	Choke, 0.22 $\mu$ h
L22	8000-00011-021	Choke AF
L23	8000-00011-019	Choke, RF 22 $\mu$ h
L24	8000-00011-019	Choke, RF 22 $\mu$ h
L27	8000-00011-022	Choke, RF
L28	8000-00004-056	Choke, 15 $\mu$ h
L29	8000-00004-054	Choke, 3.0 $\mu$ h
L30	8000-00011-019	Choke, RF 22 $\mu$ h

<u>SYMBOL #</u>	<u>PART #</u>	<u>DESCRIPTION</u>
NL	8000-00011-094	Noise Limiter Unit
PL1	8000-00004-142	Lamp, 16V, 40ma
PL2	8000-00011-056	Lamp, 14V, 75ma
PL3	8000-00004-142	Lamp, 16V, 40ma
Q1	8000-00011-004	Transistor, 2SC710B
Q2	8000-00011-053	Transistor, 3SK45L
Q3	8000-00011-054	Transistor, 2SK34C
Q4	8000-00011-055	Transistor, 2SK34E
Q5	8000-00011-047	Transistor, 2SC710C
Q6	8000-00011-047	Transistor, 2SC710C
Q7	8000-00011-047	Transistor, 2SC710C
Q8	8000-00004-085	Transistor, 2SC458C
Q9	8000-00004-089	Transistor, XA-495C
Q10	8000-00011-047	Transistor, 2SC710C
Q11	8000-00011-047	Transistor, 2SC710C
Q12	8000-00011-048	Transistor, 2SC710D
Q13	8000-00011-048	Transistor, 2SC710D
Q14	8000-00011-053	Transistor, 3SK45L
Q15	8000-00011-047	Transistor, 2SC710C
Q16	8000-00011-053	Transistor, 3SK45L
Q17	8000-00011-047	Transistor, 2SC710C
Q18	8000-00011-048	Transistor, 2SC710D
Q19	8000-00011-047	Transistor, 2SC710C
Q20	8000-00011-053	Transistor, 3SK45L
* Q21	8000-00011-048	Transistor, 2SC710D
Q22	8000-00011-051	Transistor, 2SC776(Y)
* Q23	8000-00011-052	Transistor, 2SC1239
Q24	8000-00004-085	Transistor, 2SC458C
Q25	8000-00011-050	Transistor, 2SC1061
Q26	8000-00011-050	Transistor, 2SC1061
Q27	8000-00011-049	Transistor, 2SC458LGD
Q28	8000-00004-086	Transistor, 2SD77B
Q29	8000-00004-085	Transistor, 2SC458C
Q30	8000-00004-085	Transistor, 2SC458C
R310	8000-00011-001	Resistor, Fixed, 2.2 $\Omega$ , 1/2W
R408	8000-00004-091	Resistor, Fixed, 1 $\Omega$ , 1W
R409	8000-00004-266	Resistor, Fixed, 10 $\Omega$ , 2W
RL1	8000-00004-141	Relay, 4P-2T
S1		Part of VR11
S2	8000-00004-101	Switch, 2P-2T
S3	8000-00011-092	Switch, 4P-2T
S4	8000-00011-058	Switch, Rotary, 24T
S5	8000-00004-102	Switch, Rotary, 8P-3T
SP1	8000-00011-057	Speaker, 8 $\Omega$
T1	8000-00011-028	Transformer, 27 MHz
T2	8000-00011-029	Transformer, 7.8 MHz, IF

<u>SYMBOL #</u>	<u>PART #</u>	<u>DESCRIPTION</u>
T3	8000-00011-029	Transformer, 7.8 MHz, 1F
T4	8000-00011-029	Transformer, 7.8 MHz, 1F
T5	8000-00011-030	Transformer, 7.8 MHz, Detector
T6	8000-00011-031	Transformer, 7.8 MHz, Detector
T7	8000-00011-032	Transformer, 34 MHz
T8	8000-00011-033	Transformer, 34 MHz
T9	8000-00011-034	Transformer, 19 MHz
T10	8000-00011-035	Transformer, 19 MHz
T11	8000-00011-026	Transformer, Z176, 15 MHz
T12	8000-00004-118	Transformer, 27 MHz
T13	8000-00011-036	Transformer, 27 MHz
T14	8000-00011-037	Transformer, 27 MHz
T15	8000-00011-039	Transformer, AF Driver
T16	8000-00011-040	Transformer, AF Output
T17	8000-00011-038	Transformer, 7.8 MHz
VR1	8000-00004-096	Resistor, 10K $\Omega$ , Variable
VR2	8000-00004-094	Resistor, 100K $\Omega$ , Variable
VR3	8000-00011-083	Resistor, 20K $\Omega$ , Variable
VR4	8000-00011-083	Resistor, 20K $\Omega$ , Variable
VR5	8000-00004-096	Resistor, 10K $\Omega$ , Variable
VR6	8000-00011-084	Resistor, 100K $\Omega$ , Variable
VR7	8000-00011-082	Resistor, 1K $\Omega$ , Variable
VR8	8000-00004-256	Resistor, 10K x 2, Variable
VR9	8000-00004-256	Resistor, 10K x 2, Variable
VR10	8000-00011-005	Resistor, Variable, 5K–10K $\Omega$ , w/switch
VR11	8000-00011-005	Resistor, Variable, 5K–10K $\Omega$ , w/switch
X1	8000-00011-059	Crystal, 7.8025 MHz
X2	8000-00011-060	Crystal, 7.5025 MHz
X3	8000-00011-061	Crystal, 7.4825 MHz
X4	8000-00011-062	Crystal, 7.4725 MHz
X5	8000-00011-063	Crystal, 7.4625 MHz
X6	8000-00011-064	Crystal, 11.700 MHz
X7	8000-00011-065	Crystal, 11.750 MHz
X8	8000-00011-066	Crystal, 11.800 MHz
X9	8000-00011-068	Crystal, 11.850 MHz
X10	8000-00011-069	Crystal, 11.900 MHz
X11	8000-00011-070	Crystal, 11.950 MHz
	8000-00011-072	Heat Sink, Driver Transistor
	8000-00011-073	Heat Sink, Final Transistor
	8000-00011-074	Heat Sink, Audio Output Transistor
	8000-00004-176	Mount, Feed-Thru Capacitor
	8000-00011-076	Mount, Meter
	8000-00011-077	Cord Retainer, DC Cable
	8000-00004-151	In-Line Fuse Holder
	8000-00004-153	Microphone, Complete
	8000-00004-164	Microphone, Connector
	8000-00011-078	Fuse, 3 Amp
	8000-00004-162	Channel Window
	8000-00011-075	Cabinet
	8000-00011-079	Front, Die Cast
	8000-00011-080	Overlay, Panel "SIDEBANDER II"
	8000-00004-159	Lamp Assembly, Red, Tx

<u>SYMBOL #</u>	<u>PART #</u>	<u>DESCRIPTION</u>
	8000-00004-145	Knob, Channel Selector
	8000-00004-147	Knob, Mode
	8000-00004-148	Knob, Volume & Squelch
	8000-00004-149	Knob, Squelch & RF Gain
	8000-00011-081	Mounting, Bracket
	8000-00011-086	Meter
	8000-00011-087	Cover for Crystals
	8000-00011-088	Name Plate, FCC
	8000-00011-089	Mount for Speaker
	8000-00004-160	Bolt, Mounting Bracket
	8000-00011-091	Insulator, Rubber, Speaker
	8000-00011-101	Styrofoam Box
	8000-00011-100	Display Box
	8000-00011-153	Positive/Negative Ground Mod Kit

**Supplemental Parts List for SBE-12CB/T 25W**

Q21	8000-00011-167	Transistor 2SC383
Q23	8000-00011-151	Transistor 2SC1307
D23	8000-00011-166	Diode 1S2688B
	8000-00011-157	Fuse, 4A
	8000-00011-159	Heat Sink for 2SC1307



SBE, INC.  
220 AIRPORT BLVD.  
WATSONVILLE, CA 95076